

Astro Trend

© 2022 Norm Winski

MARCH 2022

Norm Winski

6457 Autumn Woods Blvd.
Naples, Florida 34109

[239] 594-3939
Skype: nwinski_1

nwinski@embargmail.com

All of the material contained herein is the sole opinion of Norm Winski, the publisher of Astro-Trend Publication. Norm Winski will not be held responsible for accidental oversights, typos, or incorrect information from any sources that generate any of the opinions and comments found in this publication. Futures, Options on futures, and Forex trading carry significant risk, and is not for every investor. Only risk capital should be used. Past performance is not necessarily indicative of future results. Any person who chooses to use this information as a basis for any of their trading assumes all the liability and risk for themselves and hereby and absolutely agrees to indemnify and hold harmless Norm Winski. Risk may be more than the funds deposited in a trading account.

MARCH 2022



MARKET WATCH

This month's letter covers February 28th through March 27th.

The March major planetary events can be sorted into two segments.

Editor's Note: Please assume Stocks are affected by all listed events, unless stated otherwise.

1. A. 2/28 AC – Mercury Aphelion. Major change in trend Corn, Oats, Soybeans, Wheat.
 - B. 2/28 AC – Neptune 180 US Neptune. Major change in trend US Stocks, T-Bonds, US Dollar, & Oil.
 - C. 3/02 PM – New Moon in Pisces. Major change in trend Financials, Grains, Precious Metals and OIL.
 - D. 3/04 PM – Jupiter 150 US Saturn. Moderate change in trend US Stocks, T-Bonds, US Dollar.
 - E. 3/04 PM – Helio Mars enters Capricorn. Important change in trend Coffee.
 - F. 3/04 AC – Geo Mars enters Aquarius. Important change in trend Copper.
 - G. 3/04 AC – Neptune 135 US North Node. Moderate change in trend US Stocks, T-Bonds, US Dollar.
 - H. 3/08 PM – Uranus Contra-Parallel Latitude US Mars. Major change in trend US Stocks, T-Bonds, US Dollar.
2. A. 3/16 AC – Uranus 120 US PF. Major change in trend US Stocks, T-Bonds, US Dollar.
 - B. 3/17 AC – Full Moon in Virgo. Major change in trend Financials, Grains, Precious Metals & especially Soybeans.
 - C. 3/18 PM – Saturn 135 US Jupiter. Moderate change in trend US Stocks, T-Bonds, US Dollar.
 - D. 3/18 AC – Venus Maximum Elongation West. Major change in trend Cattle, Copper, Cotton, Sugar & Wheat.
 - E. 3/18 AC – Saturn 120 US Mars. Major change in trend US Stocks, T-Bonds, US Dollar.
 - F. 3/24 AC – Geo Saturn Contra-Parallel Uranus. Major change in trend Cattle, Coffee, COPPER, & Cotton.
 - G. 3/28 PM – Uranus 60 US Sun. Moderate change in trend US Stocks, T-Bonds, US Dollar.

FUTURES AND OPTIONS TRADING IS NOT SUITABLE FOR ALL INVESTORS. THE RISK OF LOSS IS SUBSTANTIAL. AN INVESTOR COULD LOSE MORE THAN THE INITIAL INVESTMENT. PAST PERFORMANCE IS NOT NECESSARILY INDICATIVE FUTURE RESULTS.

MAJOR EVENTS

Date	Events	Markets Effected
2/28 AC	Mercury Aphelion	Corn, Oats, Soybeans, Wheat
2/28 AC	Neptune 180 US Neptune	Stocks, T-Bonds, US \$, C.I. Oil
3/02 PM	New Moon in Pisces	Financls, Grains, Prec.Metals, C.I., Oil.
3/04 PM	Jupiter 150 US Asc.	Stocks, T-Bonds, US \$
3/04 PM	Helio Mars > Capricorn	Capricorn
3/04 PM	Jupiter 150 US N. Node	Stocks, T-Bonds, US \$
3/04 AC	Geo Mars > Aquarius	Copper
3/04 AC	Neptune 135 US N. Node	Stocks, T-Bonds, US \$
3/08 PM	Uranus # US Mars	Stocks, T-Bonds, US \$
3/16 AC	Uranus 120 US PF	Stocks, T-Bonds, US \$
3/17 AC	Full Moon in Virgo	Financls, Grains, Prc.Metals, Sbeans
3/18 PM	Saturn 135 US Jupiter	Stocks, T-Bonds, US \$
3/18 AC	Venus Max. Elong. West	Cattle, Copper, Cotton, Sugar, Wheat
3/18 AC	Saturn 120 US Mars	Stocks, T-Bonds, US \$
3/24 AC	Geo Saturn # Uranus	Cattle, Coffee, COPPER, Cotton
3/28 PM	Uranus 60 US Sun	Stocks, T-BONDS, US \$

MARCH 2022 MARKET MONITOR LIST

The March planetary analysis indicates that the best areas to monitor this month are:

- 1) Stocks; 2) US \$; 3) T-Bonds; 4) Oil; 5) Copper; 6) Wheat; 7 tie) Cattle & Cotton; 8) Oats; 9) DJIA*;
- 10) Soybeans; 11) C.I./CRB; 12 tie) Corn & Sugar; 13) S&P*; 14) UK; 15) Gold & OJ; 16) J-Yen;
- 17) Coffee; 18) Silver; and 19) OPEC.

2022 January Barometer & Super Bowl Indicator

Update - Two historically accurate forecasting Stock Market models are the January Barometer and the Super Bowl Stock Market Indicator.

2022 January Barometer Update – January, the S&P closed sharply lower, indicating that the market would close lower for 2022. This also indicated that in the Super Bowl, the AFC Team, the Cincinnati Bengals should win the Super Bowl.

2022 Super Bowl Indicator Update - This year, the Super Bowl was played on Sunday, February 13, between the NFC champion Los Angeles Rams and the AFC champion Cincinnati Bengals (year of the Tiger). The old Wall Street adage that as January goes, so goes the year, not only applies to the Stock Market, but also to the Super Bowl. Given the very positive track record of both models, there should be a high correlation between these two indicators. Unfortunately, that is not what happened this time, as the NFC Los Angeles Ram came from behind in the closing minutes to win. Therefore, the Super Bowl indicator is indicating that the Stock Market will close higher for 2022.

2022 – Synthesis Forecast – Considering both of these models, which seem to be in conflict to each other, and considering how the Super Bowl game and the January Barometer transpired, I think we should have a mixed year. The biggest down period should be during the middle two quarters and then there should be a rally in the 4th quarter for a marginally higher year.

FUTURES AND OPTIONS TRADING IS NOT SUITABLE FOR ALL INVESTORS. THE RISK OF LOSS IS SUBSTANTIAL. AN INVESTOR COULD LOSE MORE THAN THE INITIAL INVESTMENT. PAST PERFORMANCE IS NOT NECESSARILY INDICATIVE FUTURE RESULTS.

STOCKS

1/28 SPX CL 4431.85

2/25 SPX CL 4384.65

February Review – “This month is another high energy month with some huge cycles culminating. Following are some of the biggest and best Astro events for the coming month: 1/28 AC – Venus turns Direct; 1/31 – New Moon; 2/3 AC – Mercury turns Direct; 2/4 PM – Saturn Parallel US MC; 2/10 AM – Helio Jupiter Parallel Neptune; 2/16 AM – Full Moon; 2/16 AC - Mercury Maximum Elongation; 2/17 AC – Saturn Parallel US Moon & Mercury 0 South Latitude; 2/18 – Neptune Contra-Parallel US Neptune & Pluto 0 US Pluto (248 year cycle WOW!); and 2/22 AC – Saturn 0 US Moon. Please note the huge long term cycles hitting the US. This has the potential for some major crisis to develop. Technically, the S&P 500 is currently in a downtrend. The strong rally on 1/28 sets up a possible high into our 1/31 change in trend window.”

Results –**Market Math –**

2/3/22– 20,449 (143^2) days from the 2/09/1966 major high. 2/3 was close in price and one day past the high of the month. 2/17/22 – 729 (27^2) from the 2/19/2020 major high. 2/17 was very close in price and one day past a very good high. 2/22/22 – 12,544 (112^2) days from the 10/20/1987 major low. 2/22 was not effective.

Score – 2 out of 3 good dates = 66/67%

DJIA* – 2/7, 2/14, 2/22

2/7 was a pass. 2/14 was a good short term low. 2/22 was not effective.

Score – 1 out of 2 good dates = 50%.

S&P 500* - 1/31, 2/25

1/31 was not effective. 0 out of 1 good dates = 0%

Fibonacci – 2/6, 2/15-16, 2/18

Sunday, 2/6 was a pass. 2/15 was close in price and one day ahead of a very good high. 2/16 was a very good high.

2/18 was not effective. Score – 2 out of 3 good dates = 66.67%.

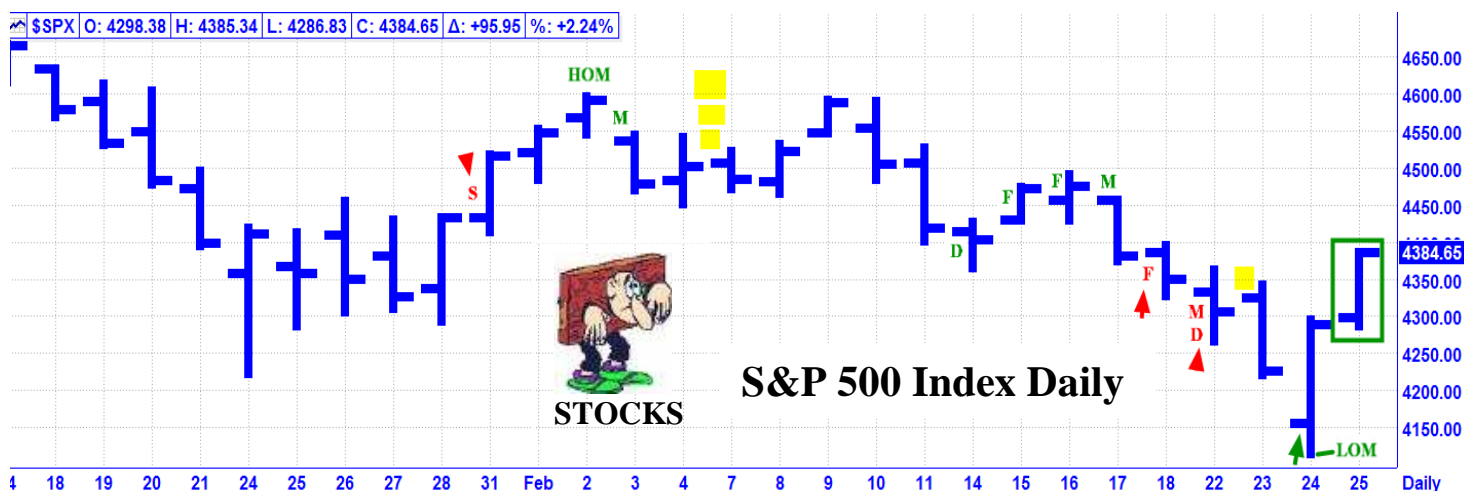
Astro – 1/31, 2/7, 2/14, 2/16, 2/18, 2/22, 2/23, 2/24

1/31, 2/18, and 2/22 were not effective. 2/7 and 2/23 were passes. 2/14 was a good short term low.

2/16 was a very good high. 2/24 was the low of the month and a very good low. Score – 3 out of 6 good dates = 50%.

Total Score – 8 out of 15 good dates = 53.33%

Additionally, the February Planetary Index did an excellent job of forecasting the S&P 500. Please see on page 21.



LEGEND: If it is **Green** it is a winner. If it is **Red** it is a miss. A **Green** encircled bar at the end of the month, is still open to evaluation due to a lack of time. **A Yellow Bar is a Pass.** Astro Date = Arrow. D = DJIA. F = Fibonacci. M = Market Math. N = NYSE. S = S&P. U = US Fed. B = BankEn/Fed. LOM = Low of the Month. HOM = High of the Month.

FUTURES AND OPTIONS TRADING IS NOT SUITABLE FOR ALL INVESTORS. THE RISK OF LOSS IS SUBSTANTIAL. AN INVESTOR COULD LOSE MORE THAN THE INITIAL INVESTMENT. PAST PERFORMANCE IS NOT NECESSARILY INDICATIVE OF FUTURE RESULTS.

Stocks continued -

March Update – The top Astro events for this months are:

2/28 AC – Mercury Aphelion & Neptune 180 US Neptune; 3/02 PM – New Moon in Pisces;
 3/08 PM – Uranus Contra-Parallel US Mars; 3/16 AC – Uranus 120 US Part of Fortune;
 3/17 AC – Full Moon in Virgo; 3/18 AC – Venus Maximum Elongation West & Saturn 120 US Mars;
 3/24 AC – Geo Saturn Contra-Parallel Uranus; and 3/28 PM Uranus 60 US Sun.

Market Math –

2/28/22 – 55 (Fib.) days from the 1/04/2022 major high.
 3/09/22 – 64 (8^2) days from the 1/04/2022 major high.
 3/11/22 – 17,956 (134^2) days from the 1/11/1973 major high.
 3/19/22 – 37,761 (181^2) days from the 7/08/1932 MAJOR low.
 3/19/22 – 4,761 (69^2) days from the 3/06/2009 major low.
 3/21/22 – 76 music + Lucas days from the 1/04/2022 major high.
 3/26/22 – 32,768 music days from the MAJOR 7/08/1932 low.
 3/26/22 – 81 (9^2) days from the 1/04/2022 major high.

DJIA* – 3/3, 3/7, 3/9, 3/14, 3/21, 3/25 AC

S&P 500* - *3/7*, 3/9, 3/14, 3/21, 3/23, 3/25 AC

Fibonacci – 3/3, 3/11, 3/15, 3/18

Astro – 3/1, 3/2-3, 3/7, 3/18-21, 3/23, 3/25

T-BONDS

01/28 ZB M22 CL 157-19

02/25 ZB M22 CL 154-12

February Review – “T-Bonds had a moderate down trend into mid January and then traded in a sideways consolidation for the balance of the month. Following is a list of the top Astro event for February. Please note that two of the major factors for T-Bonds are Pluto and the US natal chart. This month we have huge aspects to both of those factors, which includes Pluto returning to where it was on July 04, 1776. That’s a 248 year cycle. Pluto will be hanging around this neighborhood for the next 1-2 years, it is a very slow moving cycle. The top events for February are: 1/31 AC New Moon; 2/4 PM – Saturn Parallel US MC; 2/4 AC – North Node 120 US Pluto; 2/16 AM – Full Moon; 2/17 AC – Saturn Parallel US Moon; 2/18 AC – Neptune Contra-Parallel US Neptune & Pluto 0 US Pluto; 2/22 AC – Saturn 0 US Moon; and 2/23 AC Jupiter 120 US Sun.

Key Dates – 1/31, 2/1, 2/7, 2/14, 2/16, 2/18, *2/22* 2/23, 2/24, 2/25”

Results – 1/31, 2/7, and 2/18 were not effective. 2/1 was a pass. 2/14 was a good short term high. 2/16 was the exact low of the month. 2/22 was a good short term high. 2/23 was close in price and one day past the 2/22 high. 2/24 was very close in price and one day past a short term low. Score – 5 out of 8 good dates = 62.50%

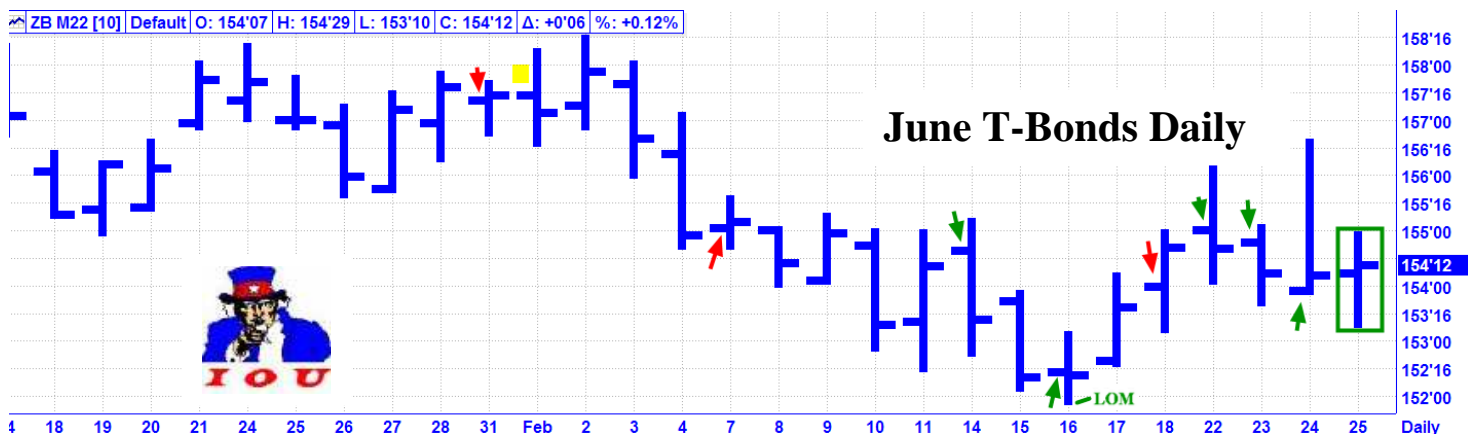
March Update – The top Astro events for T-Bonds this month are:

2/28 AC – Neptune 180 US Neptune; 3/02 PM – New Moon in Pisces;
 3/08 PM – Uranus Contra-Parallel US Mars; 3/16 AC – Uranus 120 US Part of Fortune;
 3/17 AC – Full Moon in Virgo; 3/18 PM - Saturn 120 US Mars: and 3/28 PM Uranus 60 US Sun.

Following a 2/16 low, T-Bonds traded into consolidation narrow trading range.

Key Dates – 2/28, 3/1, 3/2-3, 3/7, 3/18, 3/21, 3/25, 3/25 AC

FUTURES AND OPTIONS TRADING IS NOT SUITABLE FOR ALL INVESTORS. THE RISK OF LOSS IS SUBSTANTIAL. AN INVESTOR COULD LOSE MORE THAN THE INITIAL INVESTMENT. PAST PERFORMANCE IS NOT NECESSARILY INDICATIVE OF FUTURE RESULTS.



US DOLLAR

1/28 DX M22 CL 97.176

02/25 DX M22 CL 96.450

February Review – “The US Dollar Index had a sharp dip into mid month and then began a very strong rally into the end of the month. The US natal chart is a major factor for the US Dollar. The top Astro events for the US Dollar for February are: 1/31 AC New Moon; 2/4 PM – Saturn Parallel US MC; 2/4 AC – North Node 120 US Pluto; 2/16 AM – Full Moon; 2/17 AC – Saturn Parallel US Moon; 2/18 AC – Neptune Contra-Parallel US Neptune & Pluto 0 US Pluto; 2/22 AC – Saturn 0 US Moon; and 2/23 AC Jupiter 120 US Sun.

Key Dates – 1/31, 2/4, 2/10, 2/14, 2/16, 2/18, *2/22*, 2/23, 2/25 AC”

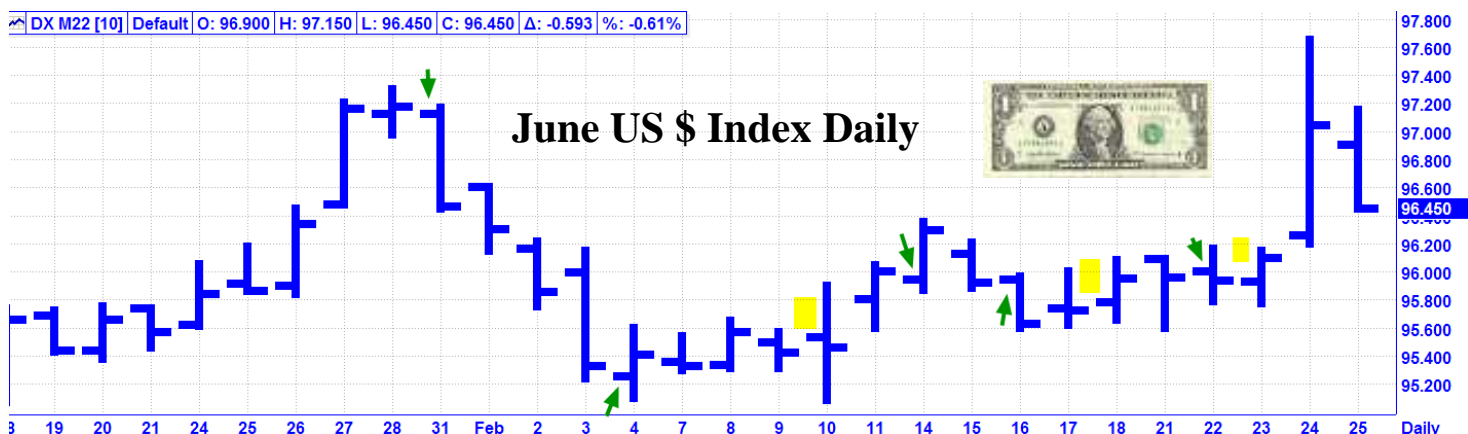
Results – 2/10, 2/18, and 2/23 were passes. 1/31 was very close in price and one day past a very good high. 2/4 was a very good low. 2/14 was a good short term high. 2/16 was a good low. 2/22 was a one day high. Score – 5 out of 5 good dates = 100%.

March Update – The top Astro events for the US Dollar this month are:

2/28 AC – Neptune 180 US Neptune; 3/02 PM – New Moon in Pisces;
 3/08 PM – Uranus Contra-Parallel US Mars; 3/16 AC – Uranus 120 US Part of Fortune;
 3/17 AC – Full Moon in Virgo; 3/18 PM - Saturn 120 US Mars: and 3/28 PM Uranus 60 US Sun.

Technically, following a 2/4 and 2/10 double bottom, the US Dollar had a sharp rally into a 2/24 high.

Key Dates – 2/28, 3/1, 3/3, 3/7, 3/18, 3/21, 3/24, 3/25



FUTURES AND OPTIONS TRADING IS NOT SUITABLE FOR ALL INVESTORS. THE RISK OF LOSS IS SUBSTANTIAL. AN INVESTOR COULD LOSE MORE THAN THE INITIAL INVESTMENT. PAST PERFORMANCE IS NOT NECESSARILY INDICATIVE OF FUTURE RESULTS.

JAPANESE YEN

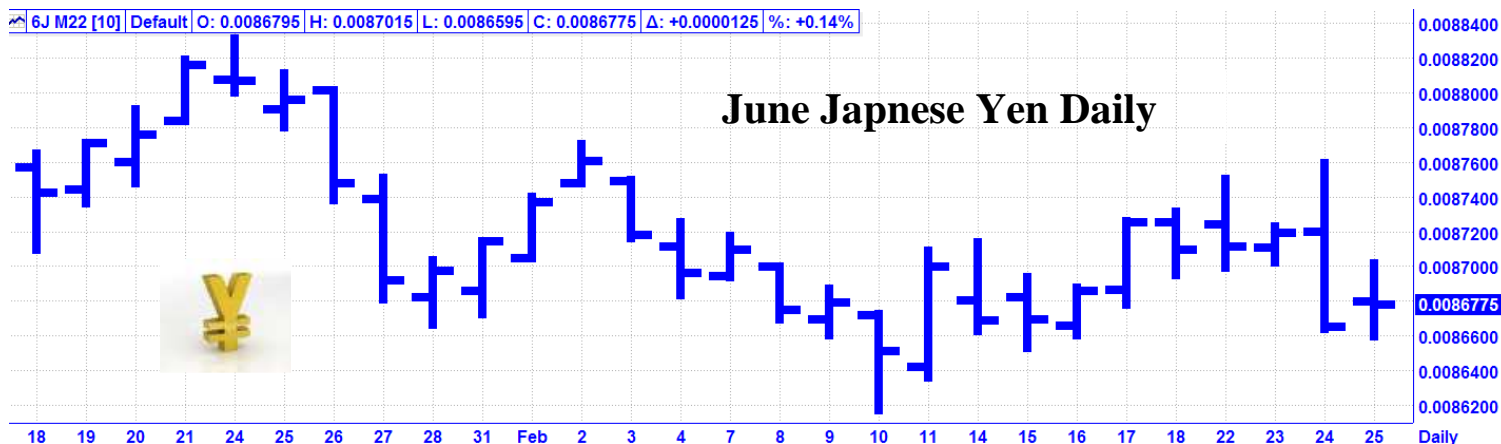
1/28 6J M22 CL .0086975

2/25 6J M22 CL .00860775

March New – The Japanese Yen is back on our radar again for March.

The Yen has been trading in a sideways range for the past few weeks.

Key Dates – 2/28, 3/2, 3/14, 3/18, 3/25 AC

CANADA

1/28 6C H22 CL 78285

1/28 TSX CL 20,741.75

2/25 6C H22 CL 78730

2/25 TSX CL 21,106.00

February Review Only -

Key Dates – 1/31, 2/1, 2/2, 2/7, 2/9, 2/16, 2/22

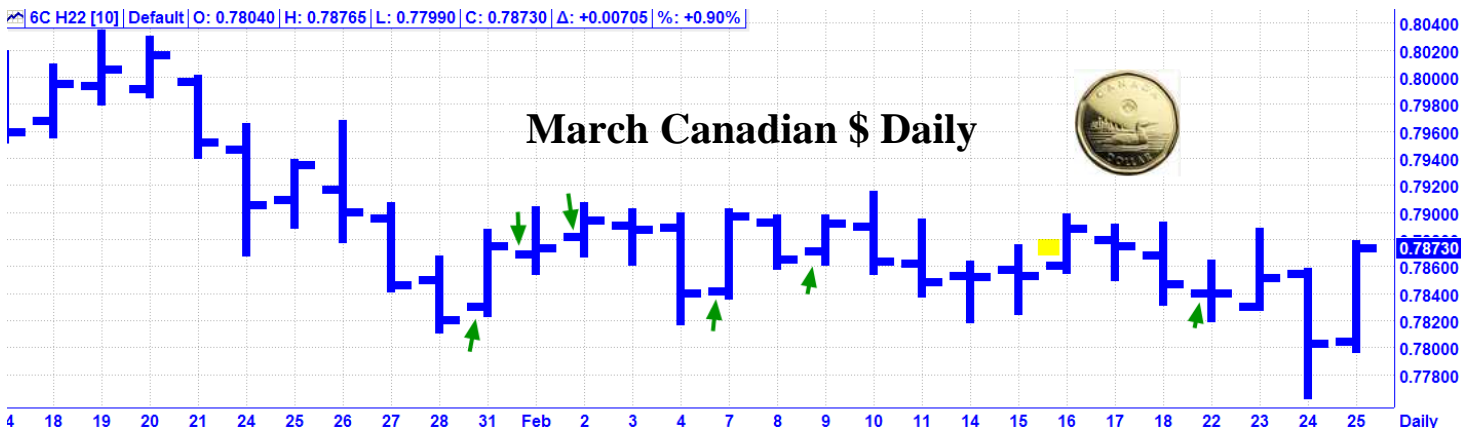
Results -

The Canadian \$ - 1/31 was a very good low. 2/1 was close in price and one day ahead of a very good high. 2/2 was a very good high. 2/7 was very close in price and one day past a good low. 2/9 was a short term low. 2/16 was a pass. 2/22 was a short term low. Score – 6 out of 6 good dates = 100%.

The TSX – 1/31 and 2/22 were not effective. 2/7 was a pass. 2/1 was very close in price and one day ahead of a short term high. 2/2 was a short term high. 2/9 was very close in price and one day ahead of the high of the month. 2/16 was close in price and one day past a very good high. Score – 4 out of 6 good dates = 66.67%.

Total Score – 10 out of 12 good dates = 83.33%.

FUTURES AND OPTIONS TRADING IS NOT SUITABLE FOR ALL INVESTORS. THE RISK OF LOSS IS SUBSTANTIAL. AN INVESTOR COULD LOSE MORE THAN THE INITIAL INVESTMENT. PAST PERFORMANCE IS NOT NECESSARILY INDICATIVE OF FUTURE RESULTS.



UNITED KINGDOM

1/28 6B M22 CL 1.3376
1/28 FTSE CL 7,466.10

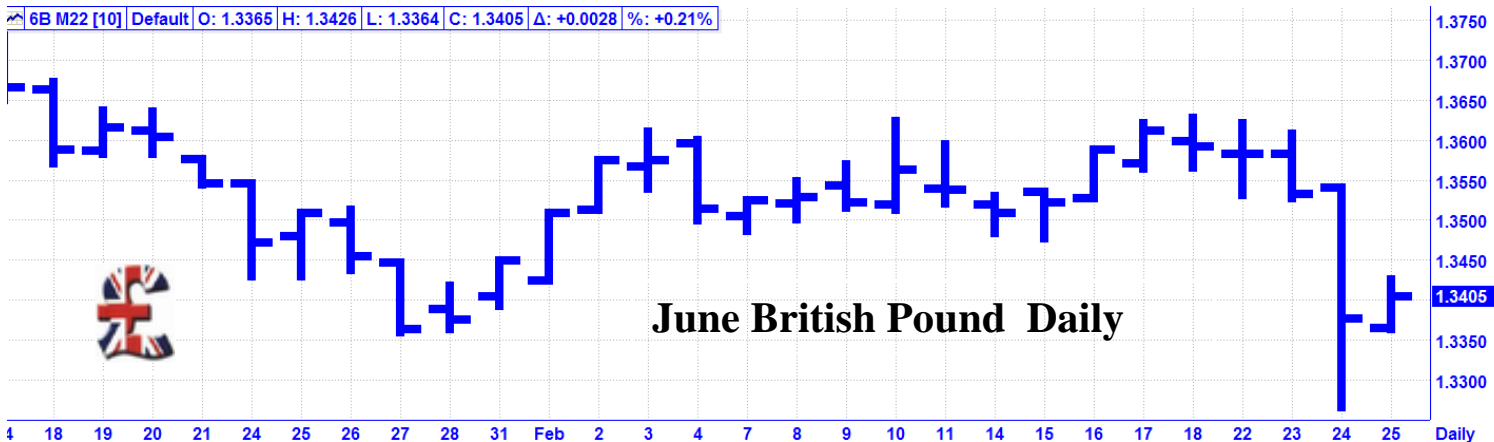
2/25 6B M22 CL 1.3405
2/25 FTSE CL 7,489.46

March New –

British Pound - traded mostly sideways for the past few weeks, until 2/23 when it began a sharp break to the down side.

FTSE – followed the S&P big drop into the 2/24 low and then the big rally into the 2/25 weekend.

Key Dates – 2/28, 3/2, 3/7, 3/9, 3/21, 3/24



FUTURES AND OPTIONS TRADING IS NOT SUITABLE FOR ALL INVESTORS. THE RISK OF LOSS IS SUBSTANTIAL. AN INVESTOR COULD LOSE MORE THAN THE INITIAL INVESTMENT. PAST PERFORMANCE IS NOT NECESSARILY INDICATIVE OF FUTURE RESULTS.



AUSSIE \$

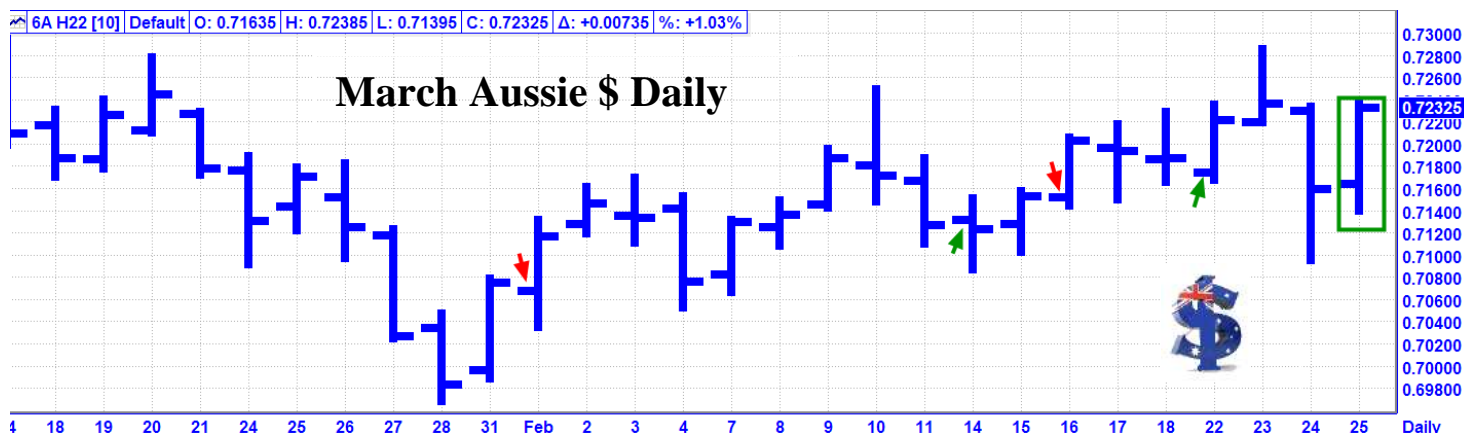
1/28 6A H22 CL .69985

2/25 6A H22 CL .72325

February Review Only – “The Aussie Dollar has popped up on our Astro radar for February. Currently this market is in a sharp decline. Watch for a possible reversal near the 2/1 New Moon.

Key Dates – 2/1, 2/14, 2/16, *2/22*, 2/25 AC”

Results – 2/1 and 2/16 were not effective. 2/14 was a very good low. 2/22 was very close in price and one day past a good short term low. Score – 2 out of 4 good dates = 50%.



EURO

1/28 6E H22 CL 1.11570

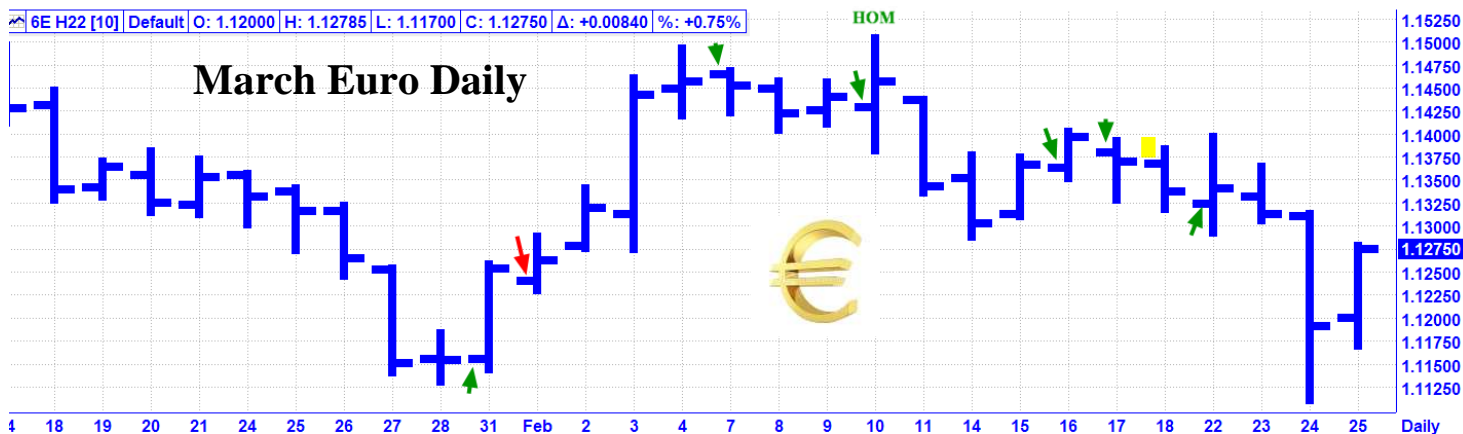
2/25 6E H22 CL 1.12750

February Review Only – “The Euro has popped up on our Astro radar for February. Currently this market is in a sharp decline. Watch for a possible reversal near the 2/1 New Moon.

Key Dates – 1/31, 2/1, 2/7, 2/10, 2/16, 2/17, 2/18, 2/22”

Results – 1/31 was very close in price and one day past an excellent low. 2/1 was very close in price and one day past a good high. 2/7 was very close in price and one day past a short term high. 2/10 was the exact high of the month. 2/16 was a very good high. 2/17 was very close in price and one day past the 2/16 high. 2/18 was a pass. 2/22 was a one day low. Score – 6 out of 7 good dates = 85.71%.

FUTURES AND OPTIONS TRADING IS NOT SUITABLE FOR ALL INVESTORS. THE RISK OF LOSS IS SUBSTANTIAL. AN INVESTOR COULD LOSE MORE THAN THE INITIAL INVESTMENT. PAST PERFORMANCE IS NOT NECESSARILY INDICATIVE OF FUTURE RESULTS.



COMMODITY INDEX - CRB

1/28 CRB CL 252.85

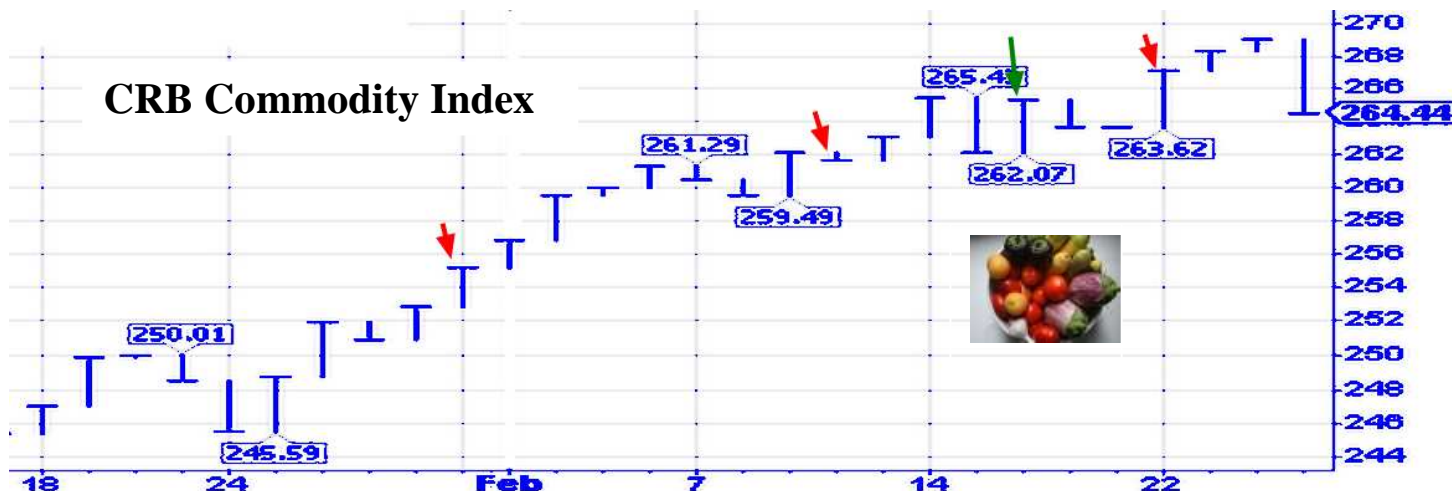
2/25 CRB CL 264.44

February Review – “The CRB continued its strong uptrend during January, indicating that inflation is not subsiding. The top Astro events for February are: 1/31 AC – New Moon; 2/10 AM - Helio Jupiter in Pisces Parallel Neptune in Pisces (Neptune and Pisces are the ruling factors for this market and that is a three star whammy); 2/16 AM – Full Moon; and 2/18 AC – Neptune Parallel US Neptune. Key Dates – 2/1, 2/10, 2/16, 2/22”

Results – 2/1, 2/10, and 2/22 were not effective. 2/16 was a short term high. Score – 1 out of 4 good dates = 25%.

March Update – The CRB reflects the wholesale price landscape and inflation. The chart shows no sign for any dip in inflation. However, beginning around 2/7 there was a slowing of upside momentum. The top Astro events for this month are: 2/28 AC – Neptune 180 US Neptune: 3/02 PM – New Moon in Pisces; and 3/17 AC – Full Moon in Virgo.

Key Dates – 3/1, 3/2, 3/10, 3/14, 3/18, 3/23, 3/25



FUTURES AND OPTIONS TRADING IS NOT SUITABLE FOR ALL INVESTORS. THE RISK OF LOSS IS SUBSTANTIAL. AN INVESTOR COULD LOSE MORE THAN THE INITIAL INVESTMENT. PAST PERFORMANCE IS NOT NECESSARILY INDICATIVE OF FUTURE RESULTS.

CRUDE OIL

1/28 CL K22 CL 84.21

2/25 CL K22 CL 90.16

February Review – “Crude rallied very strongly for most of January and is now at seven year highs. The top Astro events this month are: 1/31 AC – New Moon; 2/10 AM - Helio Jupiter in Pisces Parallel Neptune in Pisces (Neptune and Pisces are the ruling factors for this market and that is a three star whammy); 2/16 AM – Full Moon; and 2/18 AC – Neptune Parallel US Neptune. Key Dates – 2/1, 2/10, 2/16, 2/22, 2/23”

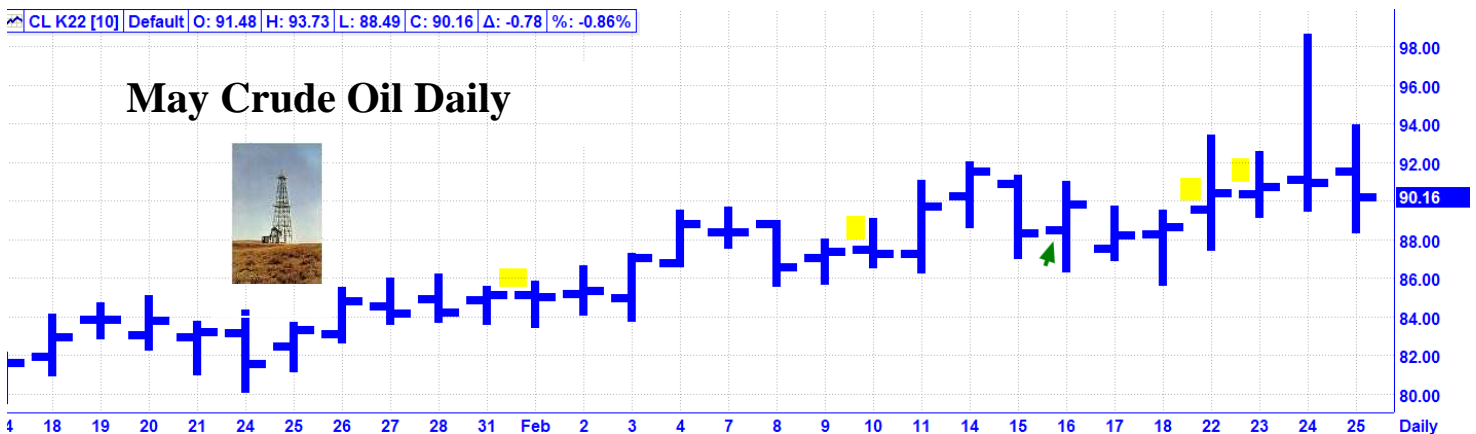
Results – 2/1, 2/10, 2/22, and 2/23 were all passes. 2/16 was a one day low. Score – 1 out of 1 good dates = 100%

March Update – It is interesting to note that on 2/24, the nearby lead contract spiked to slightly over \$100, spurred possibly by the Russian Invasion of Ukraine. However, by Friday’s close the market had retreated more than \$10. The top Astro events for this month are: 2/28 AC – Neptune 180 US Neptune; 3/02 PM – New Moon in Pisces; and 3/17 AC – Full Moon in Virgo. OPEC has popped up on our Astro radar for March. Perhaps OPEC will intervene in the current Oil supply situation?

Oil Key Dates – 2/28, 3/2, 3/3, 3/7, 3/10, 3/22, 3/18, 3/21, 3/23, 3/15

OPEC Key Dates – 2/28, 3/8, 3/15, 3/25 AC

CL K22 [10] Default O: 91.48 H: 93.73 L: 88.49 C: 90.16 Δ: -0.78 %: -0.86%

SILVER

1/28 SI N22 CL 22.383

2/25 SI N22 CL 24.370

February Review – “Silver turned down following it’s 1/20 high and is now in a down trend. The top Astro events for Silver in February are: 1/31 AC – New Moon; and 2/16 AC – Full Moon. Key Dates – *2/1*, 2/14, 2/16”

Results – 2/1 was a short term high. 2/14 was very close in price and one day ahead of a short term high. 2/16 was very close in price and one day past a very good low. Score – 3 out of 3 good dates = 100%.

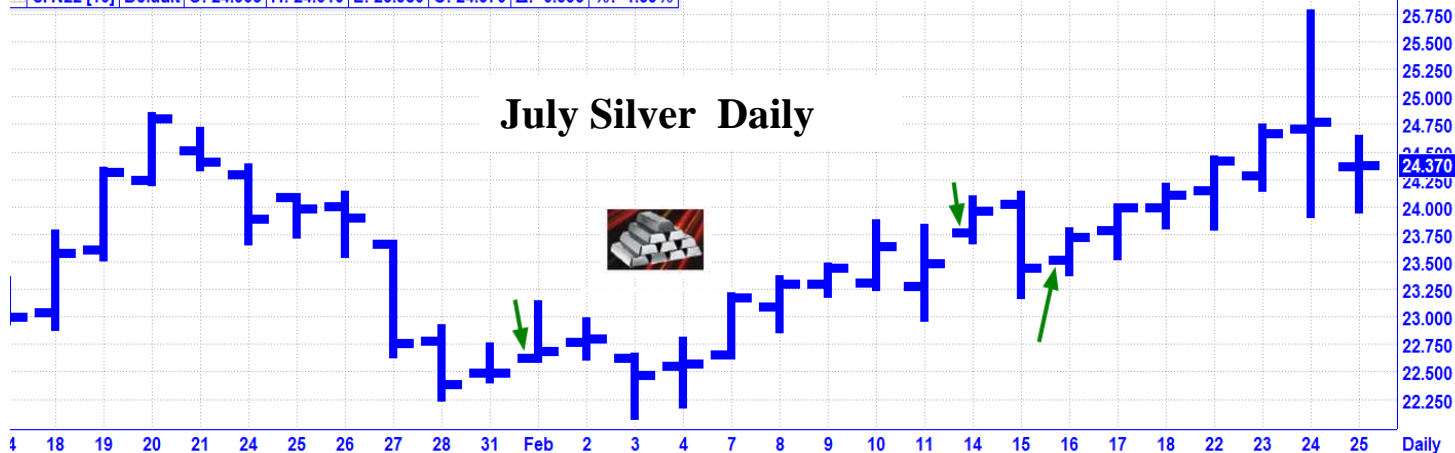
March Update – The top Astro events for this month are: 3/02 PM – New Moon in Pisces; and 3/17 AC – Full Moon in Virgo.

Technically, Silver prices rallied strongly from a 2/3 low of the month to a 2/23 high of the month.

Key Dates – 3/2, 3/18

FUTURES AND OPTIONS TRADING IS NOT SUITABLE FOR ALL INVESTORS. THE RISK OF LOSS IS SUBSTANTIAL. AN INVESTOR COULD LOSE MORE THAN THE INITIAL INVESTMENT. PAST PERFORMANCE IS NOT NECESSARILY INDICATIVE OF FUTURE RESULTS.

SI N22 [10] Default O: 24.365 H: 24.610 L: 23.980 C: 24.370 Δ: -0.393 %: -1.59%



GOLD

1/28 GC J22 CL 1786.6

2/25 GC J22 CL 1890.1

February Review – “Following a 1/25 high, Gold turned lower into an end of the month down trend. The top Astro events for February are: 1/31 AC – New Moon; and 2/16 AM – Full Moon in Leo. Key Dates – 2/1, 2/16”

Results – 2/1 was close in price and one day ahead of a short term high. 2/16 was close in price and one day past a very good low. Score – 2 out of 2 good dates = 100%.

March Update – The top Astro events for this month are: 3/02 PM – New Moon in Pisces; and 3/17 AC – Full Moon in Virgo.

Technically, from a low on 2/28, Gold had a strong rally into a 2/24 spike high.

Key Dates – 3/1, 3/2, 3/18

GC J22 [10] Default O: 1906.5 H: 1925.0 L: 1884.4 C: 1890.1 Δ: -36.2 %: -1.88%



FUTURES AND OPTIONS TRADING IS NOT SUITABLE FOR ALL INVESTORS. THE RISK OF LOSS IS SUBSTANTIAL. AN INVESTOR COULD LOSE MORE THAN THE INITIAL INVESTMENT. PAST PERFORMANCE IS NOT NECESSARILY INDICATIVE OF FUTURE RESULTS.

OJ

1/28 JO K22 CL 145.15

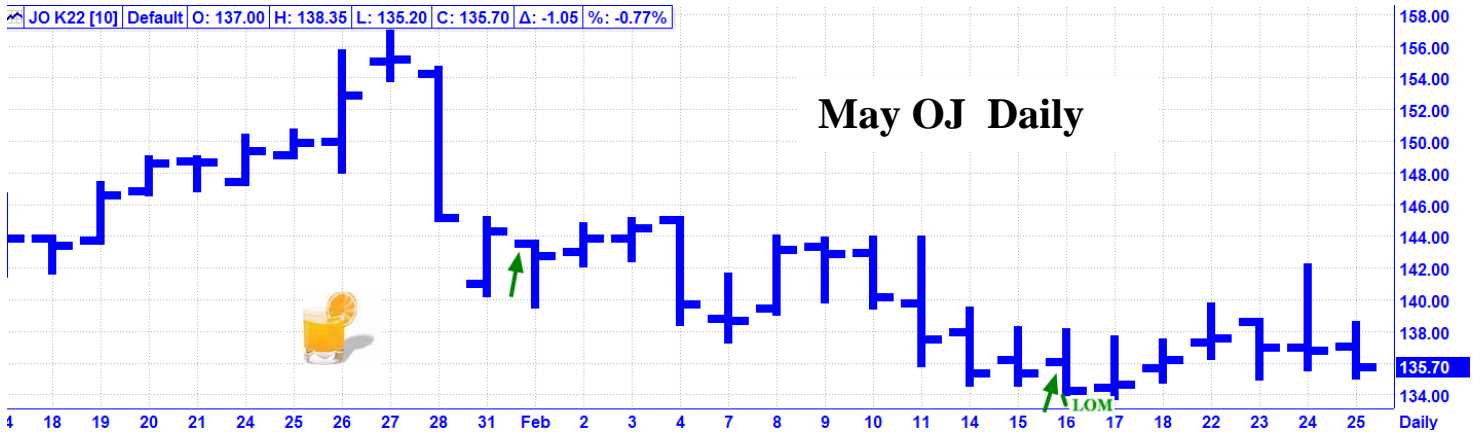
02/25 JO K22 CL 135.70

February Review – “During the past month, OJ had a very strong rally into a 1/27 high of the month reaching multi-year highs. The top Astro events for February are: 1/31 AC – New Moon; and 2/16 AM – Full Moon in Leo. Key Dates – 2/1, 2/16”

Results – 2/1 was a short term low. 2/16 was the exact low of the month. Score – 2 out of 2 good dates = 100%.

March Update – The top Astro events for this month are: 3/02 PM – New Moon in Pisces; and 3/17 AC – Full Moon in Virgo. OJ had a strong decline into a 2/16 low of the month and is now consolidating in a narrow range.

Key Dates – 3/1, 3/2, 3/18



SUGAR

1/28 SB N22 CL 17.76

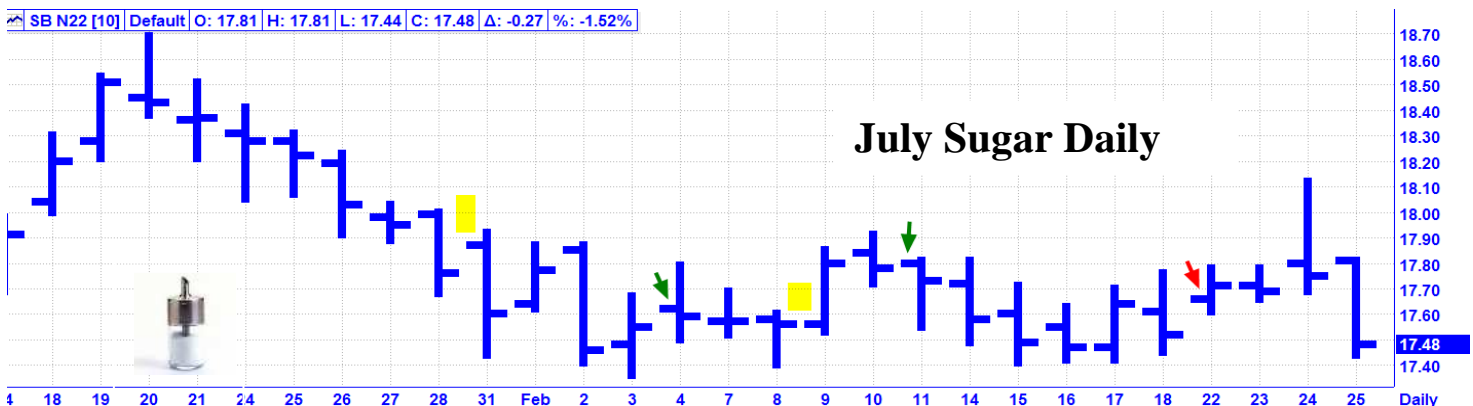
2/25 SB N22 CL 17.48

February Review – “Sugar had a large decline into a 1/10 low, which was a forecasted key date. Then, Sugar rallied into a 1/20 high of the month. From that high, there was a large decline into the end of the month. The top Astro event for Sugar this month is 1/28 AC – Venus turns Direct. Key Dates – 1/31, 2/4, 2/9, 2/11, 2/22”

Results – 1/31 and 2/9 were passes. 2/4 was a short term high. 2/11 was close in price and one day past a good short term high. 2/22 was not effective. Score – 2 out of 3 good dates = 66.67%.

March Update – The top Astro event for Sugar this month is 3/18 AC – Venus Maximum Elongation West. During February, Sugar declined into a mid-month low and then traded in a sideways trend.

Key Dates – 3/4, 3/7, 3/21, 3/25



FUTURES AND OPTIONS TRADING IS NOT SUITABLE FOR ALL INVESTORS. THE RISK OF LOSS IS SUBSTANTIAL. AN INVESTOR COULD LOSE MORE THAN THE INITIAL INVESTMENT. PAST PERFORMANCE IS NOT NECESSARILY INDICATIVE OF FUTURE RESULTS.

CATTLE

1/28 LE J22 CL 143.175

2/25 LE J22 CL 141.900

February Review – “During January, Cattle had a zig zag decline into a 1/24 low of the month. This was followed by a recovery rally into the end of the month. The top Astro events for the coming month are:

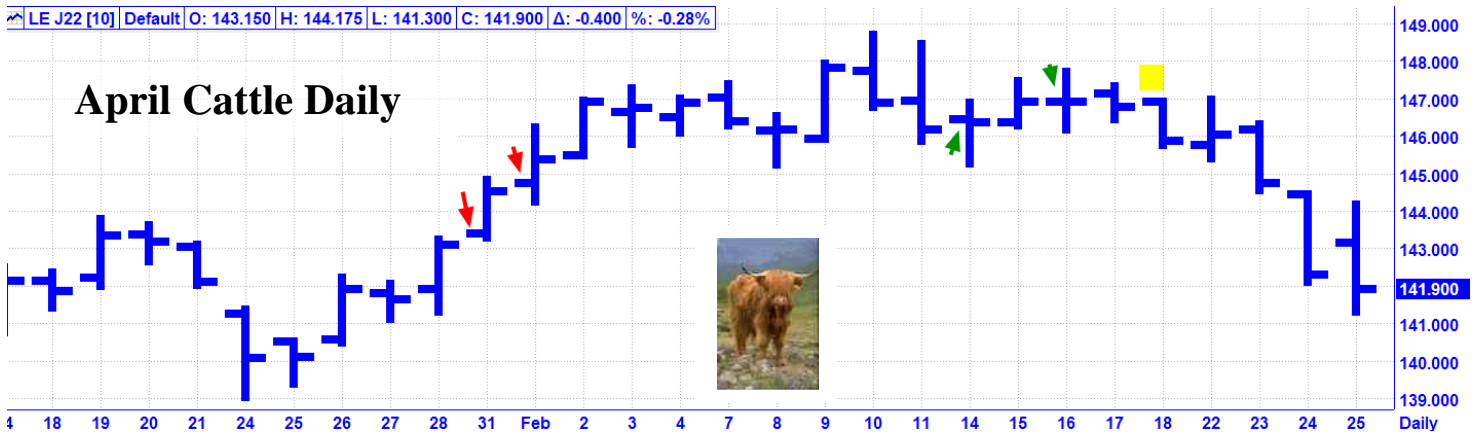
1/28 AC – Venus turns Direct: 2/17 AC – Jupiter 60 Uranus in Taurus. Venus is the planetary ruler and Taurus the Bull is the ruling sign for Cattle. Key Dates – 1/31, 2/1, 2/14, 2/16, 2/18”

Results – 1/31 and 2/1 were not effective. 2/14 was a short term low. 2/16 was a very good high. 2/18 was a pass. Score – 2 out of 4 good dates = 50%.

March Update – The top Astro events for Cattle this month are:

3/18 AC – Venus Maximum Elongation West and 3/24 AC – Saturn in Aquarius Contra-Parallel Uranus in Taurus. Cattle had a strong rally into mid February and then retraced about halfway into the end of the month.

Key Dates – 3/2, 3/7, 3/21, 3/23, 3/25

COTTON

1/28 CT N22 CL 117.87

2/25 CT N22 CL 115.34

February Review – “During the past month, Cotton had a strong uptrend for most of the month. The top Astro events for the coming month are: 1/28 AC – Venus turns Direct: 2/17 AC – Jupiter 60 Uranus in Taurus. Venus is the planetary ruler and Taurus the Bull is the ruling sign for Cotton. Key Dates – 1/31, 2/1, 2/14, 2/16, 2/18”

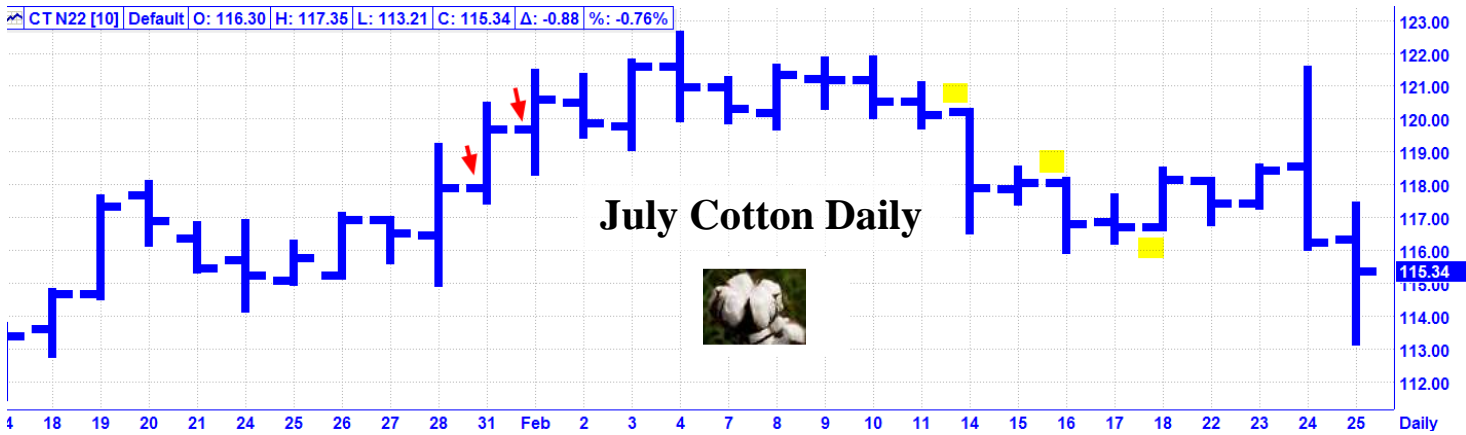
Results – 1/31 and 2/1 were not effective. 2/14, 2/16, and 2/18 were passes. Score – 0 out of 2 good dates = 0%.

March Update – The top Astro events for Cotton this month are:

3/18 AC – Venus Maximum Elongation West and 3/24 AC – Saturn in Aquarius Contra-Parallel Uranus in Taurus. Cotton rallied into a 2/4 high of the month and then declined into a 2/16 low. From that low, Cotton traded mostly sideways with the exception of a huge one day spike high, on 2/24, to retest the 2/4 high.

Key Dates – 3/2, 3/7, 3/21, 3/23, 3/25

FUTURES AND OPTIONS TRADING IS NOT SUITABLE FOR ALL INVESTORS. THE RISK OF LOSS IS SUBSTANTIAL. AN INVESTOR COULD LOSE MORE THAN THE INITIAL INVESTMENT. PAST PERFORMANCE IS NOT NECESSARILY INDICATIVE OF FUTURE RESULTS.



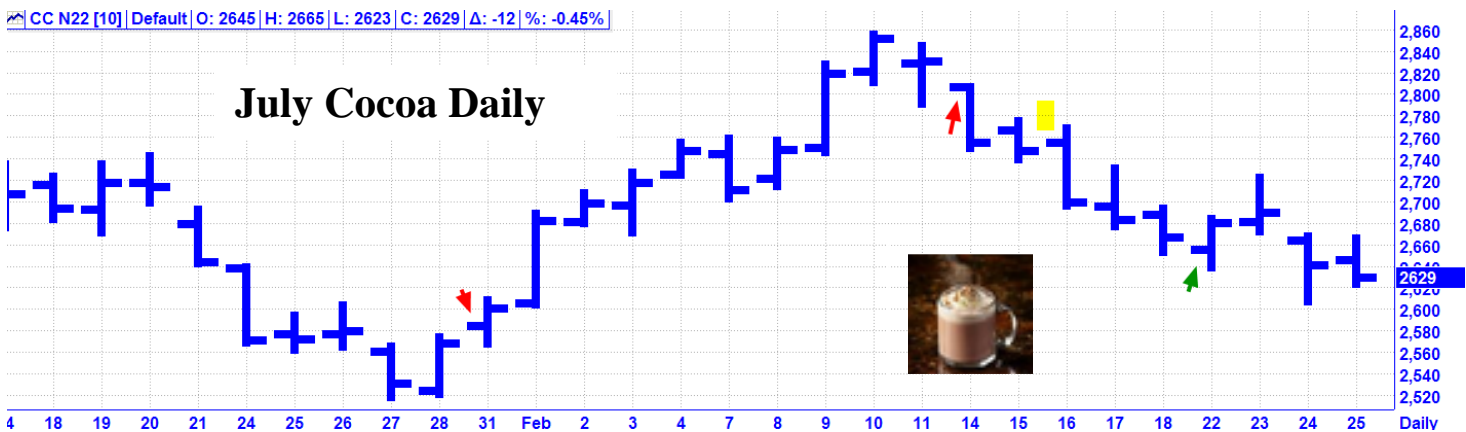
1/28 CC H22 CL 2496

COCOA

2/25 CC H22 CL 2629

February Review Only – “Cocoa is back on our Astro radar screen. During the past month, Cocoa traded in a wide trading range. Key Dates – 1/31, 2/14, 2/16, 2/22”

Results – 1/31 and 2/14 were not effective. 2/16 was a pass. 2/22 was a short term low.
Score – 1 out of 3 good dates = 33.34%.



1/28 HE J22 CL 95.075

HOGS

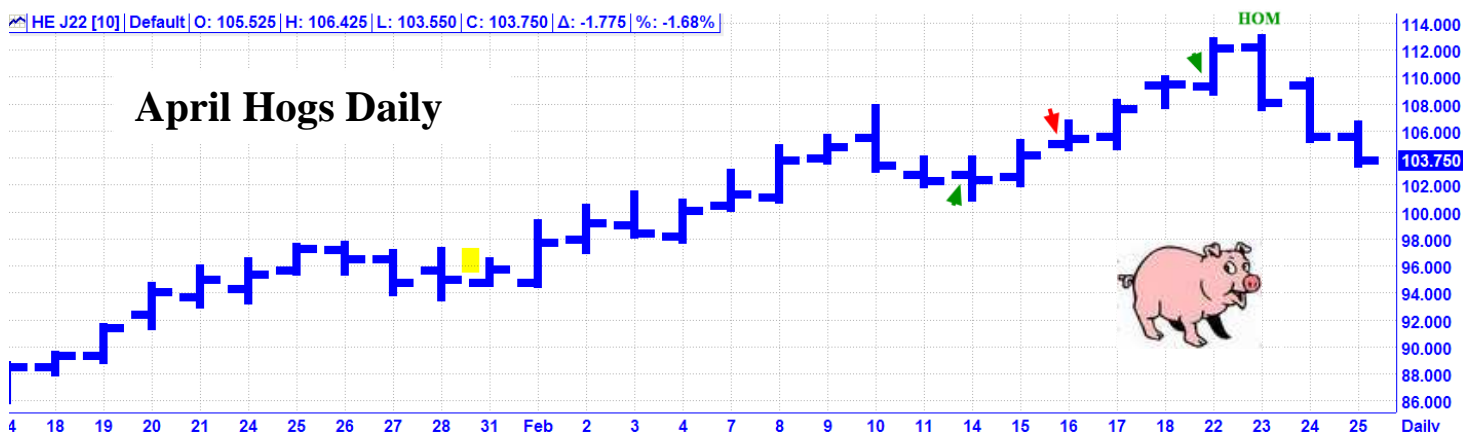
2/25 HE J22 CL 103.750

February Review Only – “Hogs are back on our Astro radar screen. During the past month, Hogs had a dip into a 1/11 trough and then ran for a very strong rally into a 1/26 high of the month. Key Dates – 1/31, 2/14, 2/16, 2/22”

Results – 1/31 was a pass. 2/14 was a very good low. 2/16 was not effective. 2/22 was close in price and one day ahead of the high of the month. Score – 2 out of 3 good dates = 66.67%.

FUTURES AND OPTIONS TRADING IS NOT SUITABLE FOR ALL INVESTORS. THE RISK OF LOSS IS SUBSTANTIAL. AN INVESTOR COULD LOSE MORE THAN THE INITIAL INVESTMENT. PAST PERFORMANCE IS NOT NECESSARILY INDICATIVE OF FUTURE RESULTS.

HE J22 [10] | Default | O: 105.525 | H: 106.425 | L: 103.550 | C: 103.750 | Δ: -1.775 | %: -1.68%



GRAINS

The historical short term key to the grains, especially Corn and Soybeans, has been a combination of the lunar cycle and the movements of Mercury. These markets tend to make short term reversals on New Moons and Full Moons. Historically, Full Moons have been lows and New Moons have usually been highs. However, recently this pattern has been inverted. Mercury turns retrograde approximately every 120 days, for a period of about 21 days. Grains tend to make highs at Mercury Retrograde and lows when it turns Direct. Recently, Mercury turned Retrograde in Aquarius, 1/13 AC, and turned Direct, in Capricorn, 2/03 AC.

An ideal lunar cycle setup is when a market has a sizeable move into a Full Moon or a New Moon.

March Key Dates:

- 2/28 AC – Mercury Aphelion. Corn, Oats, Soybeans, Wheat.
- 3/02 PM – New Moon in Pisces - Corn, Oats, Soybeans, Wheat.
- 3/17 AC – Full Moon in Virgo. - Corn, Oats, SOYBEANS, Wheat.
- 3/18 AC – Venus Maximum West Elongation. Wheat.

CORN

1/28` ZC N22 CL 6262

02/25 ZC N22 CL 6440

February Review – “The first half of January had Corn trading in a sideways trading range, culminating with a final low on 1/14. This led to a very strong rally into the end of the month. The top Astro events for the coming month are: 1/31 AC – New Moon in Aquarius; 2/03 AC – Mercury in Capricorn turns Direct; 2/16 AM – Full Moon in Leo; 2/16 AC – Mercury Maximum West Elongation; and 2/17 AC – Mercury 0 South Latitude. Key Dates – 1/31, 2/1, 2/4, 2/11, 2/16, 2/17, 2/18, 2/22”

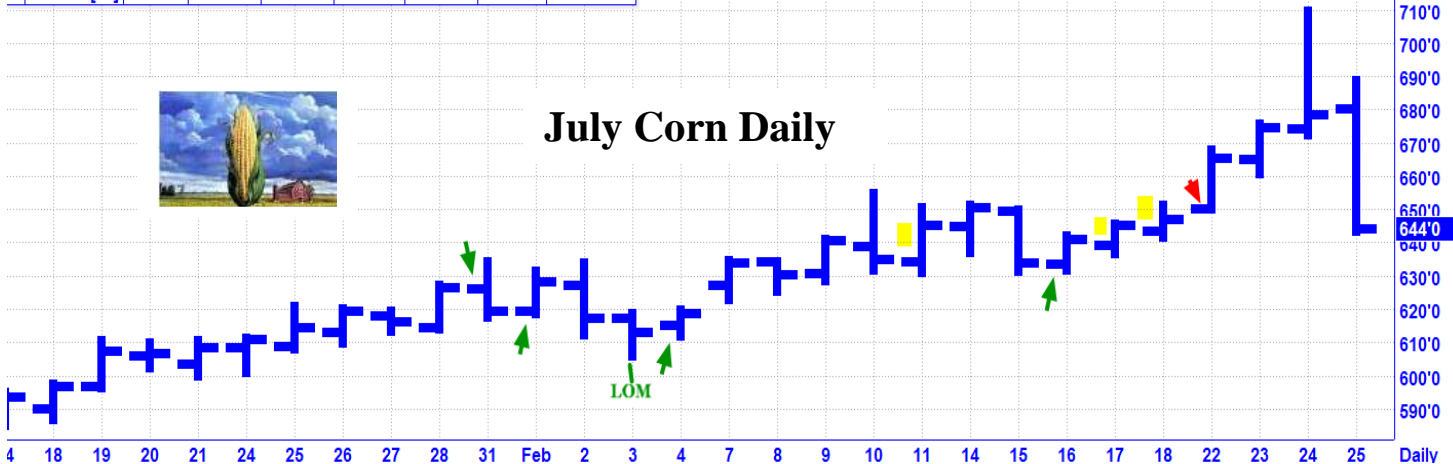
Results – 2/11, 2/17, and 2/18 were passes. 2/22 was not effective. 1/31 was a short term high. 2/1 was a short term low. 2/4 was very close in price and one day past the low of the month. 2/16 was a very good low.
Score – 4 out of 5 good dates = 80%

March Update – The top Astro events for Corn this month are: 2/28 AC – Mercury Aphelion; 3/02 PM – New Moon in Pisces; and 3/17 AC – Full Moon in Virgo. Corn had a strong trend higher into a 2/24 spike blow off top.

Key Dates – 3/1, 3/2, 3/7, 3/18, 3/25

FUTURES AND OPTIONS TRADING IS NOT SUITABLE FOR ALL INVESTORS. THE RISK OF LOSS IS SUBSTANTIAL. AN INVESTOR COULD LOSE MORE THAN THE INITIAL INVESTMENT. PAST PERFORMANCE IS NOT NECESSARILY INDICATIVE OF FUTURE RESULTS.

ZC N22 [10] Default | O: 680'0 | H: 688'4 | L: 643'4 | C: 644'0 | Δ: -34'4 | %: -5.08%



Please see Oats in the Martian Market Review later in this letter.

SOYBEANS

1/28 ZS N22 14734

2/25 ZS N22 15716

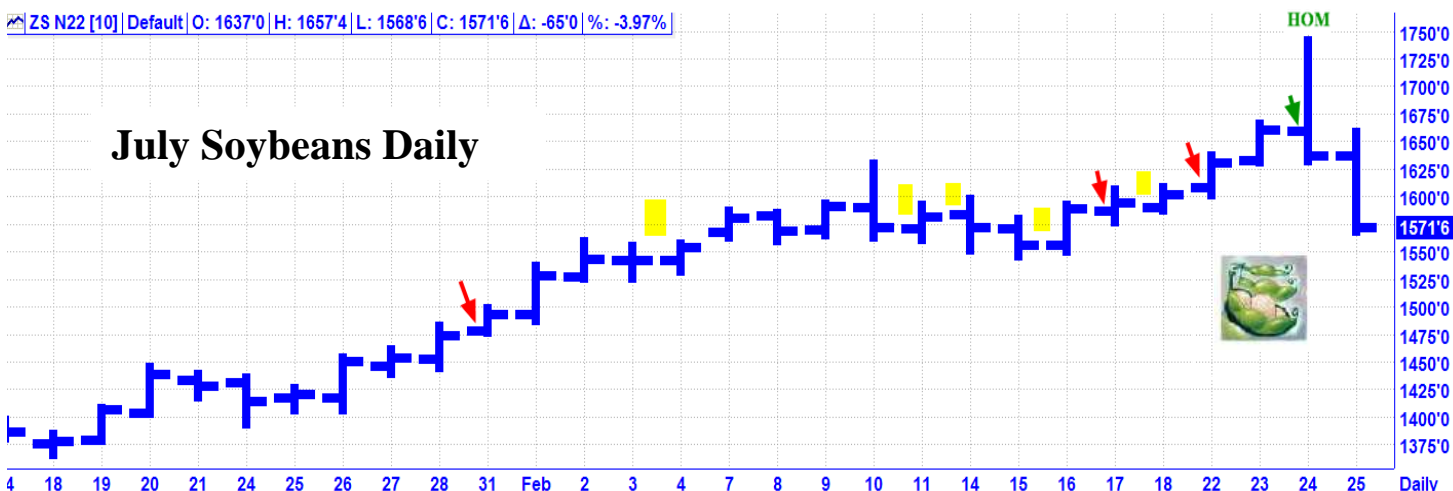
February Review – “Following some weakness early in the month, Soybeans zig zagged into a very strong rally in the second half of the month. The top Astro events for the coming month are: 1/31 AC – New Moon in Aquarius; 2/03 AC – Mercury in Capricorn turns Direct; 2/16 AM – Full Moon in Leo; 2/16 AC – Mercury Maximum West Elongation; and 2/17 AC – Mercury 0 South Latitude. Key Dates – 1/31, 2/4, 2/11, 2/14, 2/16, 2/17, 2/18, 2/22, 2/24”

Results – 2/4, 2/11, 2/14, 2/16, and 2/18 were all passes. 1/31, 2/17, and 2/22 were not effective. 2/24 was the exact high of the month. Score – 1 out of 4 good dates = 25%.

March Update – The top Astro events for Soybeans this month are: 2/28 AC – Mercury Aphelion; 3/02 PM – New Moon in Pisces; and 3/17 AC – Full Moon in VIRGO, which is the ruling sign for Soybeans. Soybeans trended higher into a 2/24 blow off high.

Key Dates – 2/28, 3/1, 3/7, *3/18*, 3/25

ZS N22 [10] Default | O: 1637'0 | H: 1657'4 | L: 1568'6 | C: 1571'6 | Δ: -65'0 | %: -3.97%



FUTURES AND OPTIONS TRADING IS NOT SUITABLE FOR ALL INVESTORS. THE RISK OF LOSS IS SUBSTANTIAL. AN INVESTOR COULD LOSE MORE THAN THE INITIAL INVESTMENT. PAST PERFORMANCE IS NOT NECESSARILY INDICATIVE OF FUTURE RESULTS.

WHEAT

1/28 ZW N22 CL 7820

2/25 ZW N22 CL 8500

February Review – “Following a decline into mid January, Wheat had a strong rally into a 1/25 peak and then pulled back into the end of the month. The top Astro events for the coming month are:

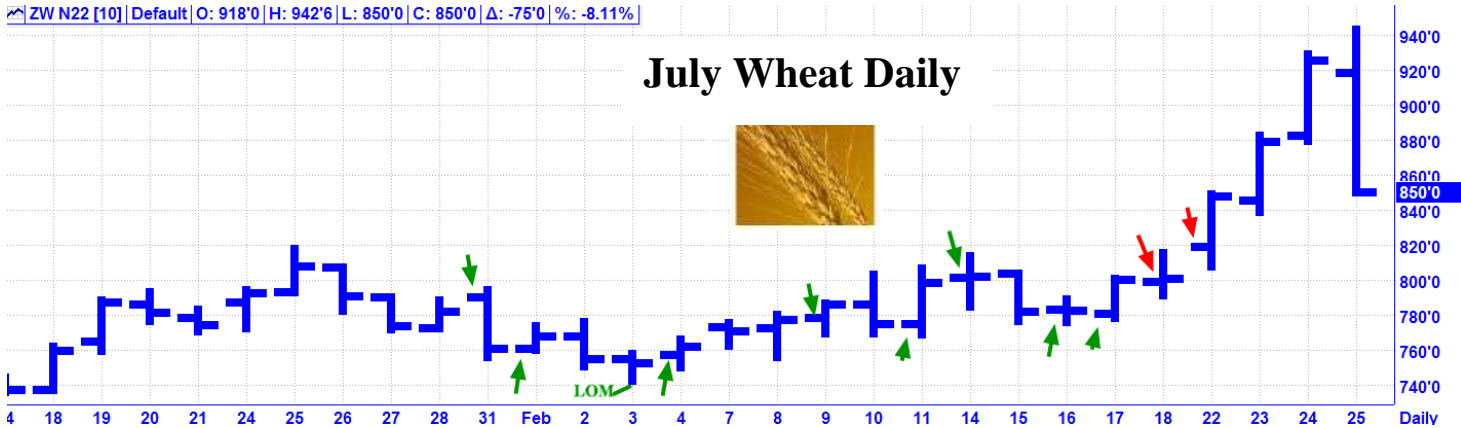
1/28 AC – Venus turns Direct; 1/31 AC – New Moon in Aquarius; Mercury in Capricorn turns Direct; 2/16 AM – Full Moon in Leo; 2/16 AC – Mercury Maximum West Elongation; and 2/17 AC – Mercury 0 South Latitude. Key Dates – 1/31, 2/1, 2/4, 2/9, 2/11, 2/14, 2/16, 2/17, 2/18, 2/22”

Results – 1/31 was a short term high. 2/1 was a short term low. 2/4 was very close in price and one day past the low of the month. 2/9 was close in price and one day ahead of a good high. 2/11 was a good low. 2/14 was a short term high. 2/16 was a very good low. 2/17 was close in price and one day past the 2/16 low. 2/18 and 2/22 were not effective. Score – 8 out of 10 good dates = 80%.

March Update – The top Astro events for Wheat this month are: 2/28 AC – Mercury Aphelion; 3/02 PM – New Moon in Pisces; 3/17 AC – Full Moon in Virgo and 3/18 AC – Venus Maximum Elongation West. Wheat prices made a 2/3 low of the month and then accelerated into a 2/24 blow off top.

Key Dates – 3/1, 3/2, 3/4, 3/7, 3/18, 3/21, 3/25

[ZW N22 \[10\]](#) | [Default](#) | O: 918'0 | H: 942'6 | L: 850'0 | C: 850'0 | Δ: -75'0 | %: -8.11%

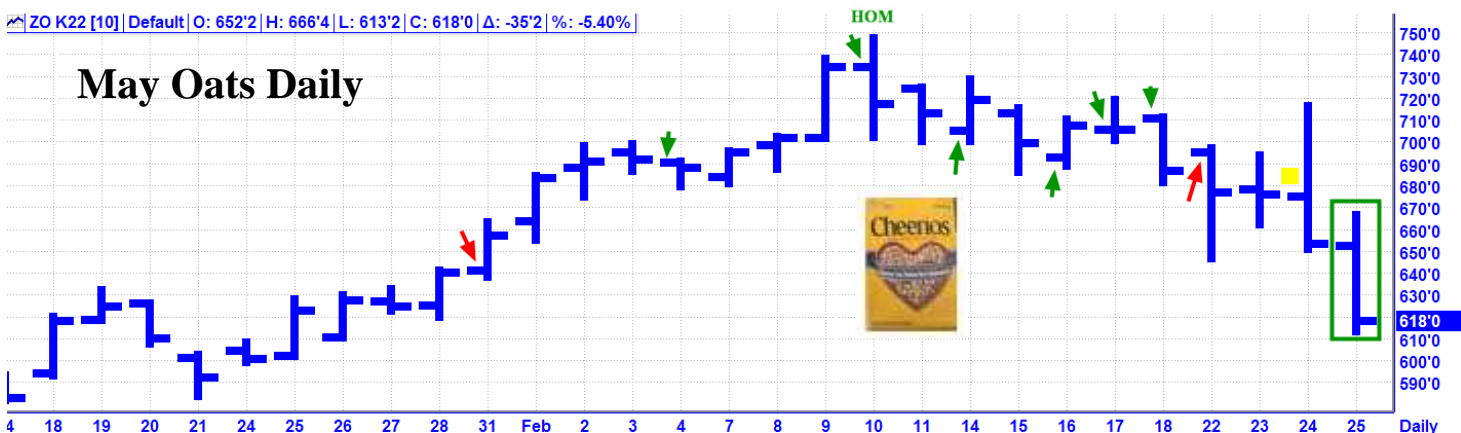


MARTIAN MARKETS OF THE MONTH REVIEW

01/07 AC – Helio Mars entered Sagittarius. Sagittarius is the ruling sign for Oats. Secondly, Sagittarius is harmonically related to Leo – Corn, Gold, Oj; Virgo – Soybeans; and Pisces – Commodity Index & Oil.

1/21 AC – Geo Mars entered Capricorn. Capricorn is the ruling sign for Coffee. Secondly, Capricorn is harmonically related to Taurus – Cattle & Cotton; Cancer – Silver; Virgo – Soybeans; and Libra – Sugar & Wheat.

[ZO K22 \[10\]](#) | [Default](#) | O: 652'2 | H: 666'4 | L: 613'2 | C: 618'0 | Δ: -35'2 | %: -5.40%



FUTURES AND OPTIONS TRADING IS NOT SUITABLE FOR ALL INVESTORS. THE RISK OF LOSS IS SUBSTANTIAL. AN INVESTOR COULD LOSE MORE THAN THE INITIAL INVESTMENT. PAST PERFORMANCE IS NOT NECESSARILY INDICATIVE OF FUTURE RESULTS.

OATS

1/28 ZO K22 CL 6400

2/25 ZO K22 CL 6180

February Review – “Oats declined into a mid month low and then zig zagged higher into the end of the month. The top Astro events for the coming month are:

1/28 AC – Venus turns Direct; 1/31 AC – New Moon in Aquarius; Mercury in Capricorn turns Direct;
 2/09 AC – Helio Jupiter in Pisces Parallel Latitude Neptune; 2/16 AM – Full Moon in Leo;
 2/16 AC – Mercury Maximum West Elongation; and 2/17 AC – Mercury 0 South Latitude.
 Key Dates – 1/31, 2/4, 2/10, 2/14, 2/16, 2/17, 2/18, 2/22, 2/24, 2/25”

Results – 1/31 and 2/22 were not effective. 2/4 was very close in price and one day past a short term high. 2/10 was the exact high of the month. 2/14 was a short term low. 2/16 was a short term low. 2/17 was a good high. 2/18 was very close in price and one day past the 2/17 high. 2/24 was a pass. Score – 6 out of 8 good dates = 75%.

March Update – Oats rallied strongly into a 2/10 high of the month and then turned down into the end of the month. The top Astro events for Oats this month are: 2/28 AC – Mercury Aphelion;
 3/02 PM – New Moon in Pisces; and 3/17 AC – Full Moon in Virgo.

Key Dates – 3/1, 3/2-3, 3/18

COFFEE

1/28 KC N22 CL 235.60

2/25 KC H22 CL 236.60

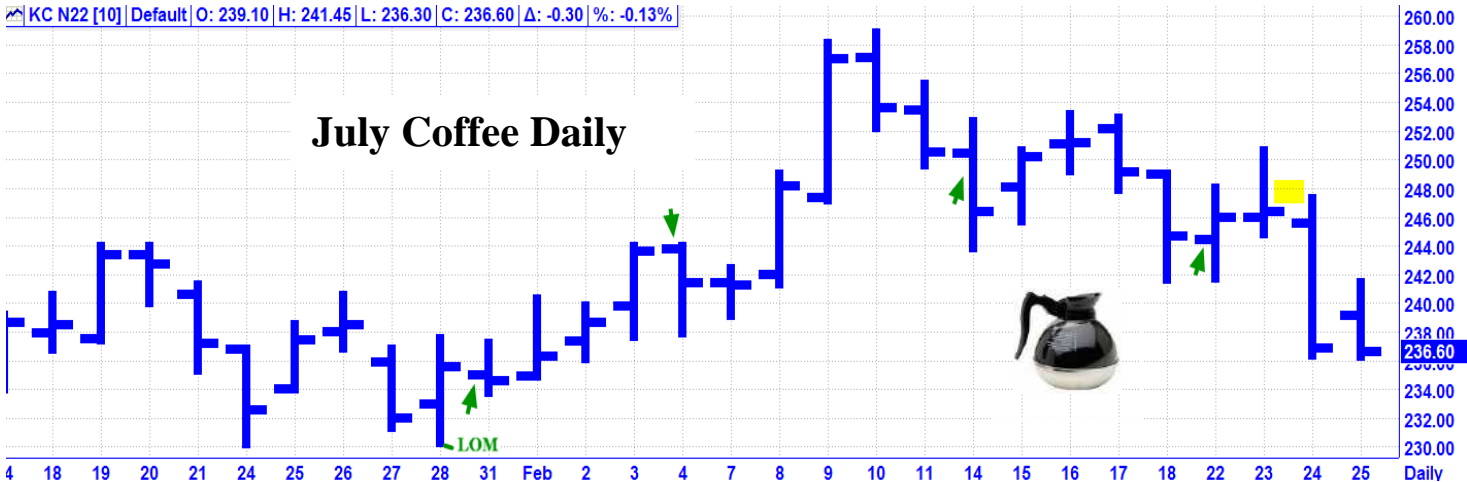
February Review – “Coffee had a pullback low on 1/3 with the New Moon in Capricorn. From that low, Coffee had a strong rally into a 1/20 peak and then pulled back into a consolidation into the last week of the month. The top Astro events for this month are: 1/28 AC – Venus in Capricorn turns Direct; 2/3 – Mercury in Capricorn turns Direct; and 2/23 AC – Jupiter 45 Pluto in Capricorn. Key Dates – 1/31, 2/4, 2/14, 2/22, 2/24”

Results – 1/31 was close in price and one day past the low of the month. 2/4 was a short term high. 2/14 was a short term low. 2/22 was a short term low. 2/24 was a pass. Score – 4 out of 4 good dates = 100%.

March Update – The top Astro events for this month for Coffee are: 3/04 AC – Helio Mars enters Capricorn and 3/24 AC – Geo Saturn in Aquarius Contra-Parallel Uranus in Taurus. Coffee had a strong rally into 2/10 and then turned lower into the end of the month.

Key Dates – 3/3, 3/7, 3/25

[KC N22 \[10\]](#) | Default | O: 239.10 | H: 241.45 | L: 236.30 | C: 236.60 | Δ: -0.30 | %: -0.13%



FUTURES AND OPTIONS TRADING IS NOT SUITABLE FOR ALL INVESTORS. THE RISK OF LOSS IS SUBSTANTIAL. AN INVESTOR COULD LOSE MORE THAN THE INITIAL INVESTMENT. PAST PERFORMANCE IS NOT NECESSARILY INDICATIVE OF FUTURE RESULTS.

MARTIAN MARKETS OF THE MONTH

NEW

3/04 AC – Helio Mars enters Capricorn. Capricorn is the ruling sign for Coffee. Secondly, Capricorn is harmonically related to Taurus – Cattle & Cotton; Cancer – Silver; Virgo – Soybeans; and Libra – Sugar & Wheat.

3/04 AC – Geo Mars enters Aquarius. Aquarius is the ruling sign for Copper. Secondly, Aquarius is harmonically related to Taurus – Cattle & Cotton; Leo – Corn, Gold, & OJ; Libra – Sugar & Wheat; and Scorpio – Cocoa, Hogs, T-Bonds.

COPPER

1/28 HG N22 CL 4.3115

2/25 HG N22 CL 4.4900

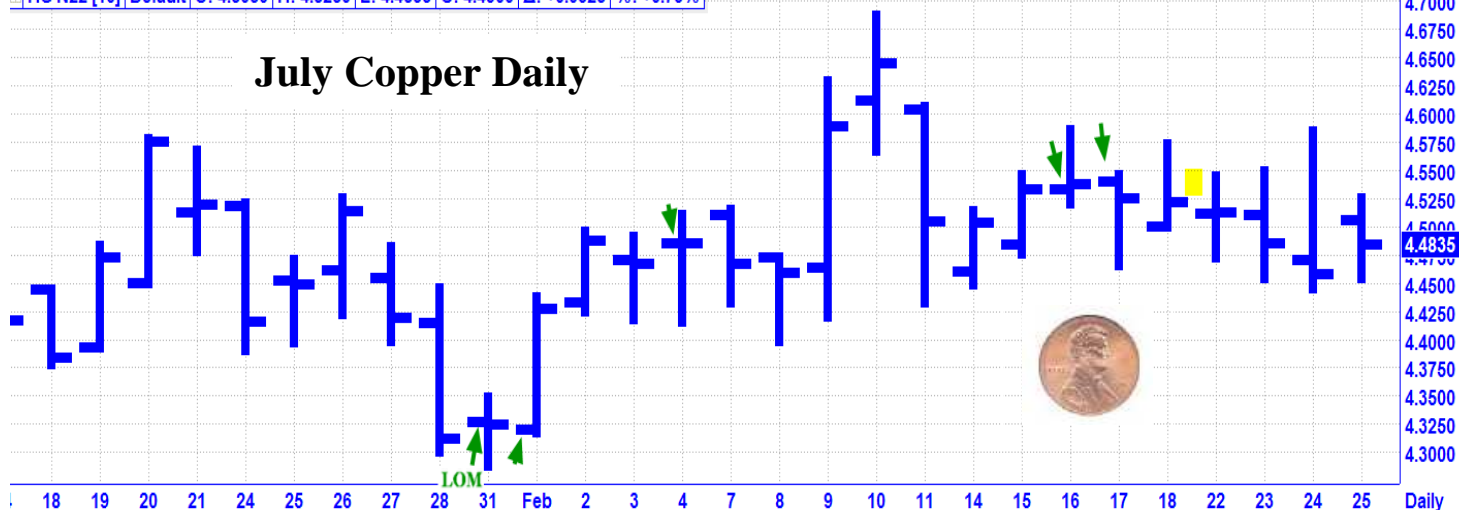
February Review – “January was a very whippy choppy month for Copper. The top Astro events for February are: 1/31 AC – New Moon in Aquarius; and 2/17 AC – Jupiter 60 Uranus. Key Dates – 1/31, 2/1, 2/4, 2/16, 2/17, 2/22”

Results – 1/31 was the exact low of the month. 2/1 was very close in price and one day past the 1/31 low. 2/4 was a short term high. 2/16 was a short term high. 2/17 was close in price and one day past the 2/17 high. 2/22 was a pass. Score – 4 out of 4 good dates = 100%.

March Update – Following a strong rally into a 2/10 high, Copper had a sharp reversal to the downside and then reverted to a sideways trading range. The top Astro events for Copper this month are: 3/04 AC – Geo Mars enters Aquarius; 3/18 AC – Venus Maximum Elongation West; and 3/24 AC Geo Saturn in Aquarius Contra-Parallel Uranus in Taurus.

Key Dates – 3/2, 3/4, 3/7, 3/21, 3/23, 3/25

[HG N22 \[10\]](#) | [Default](#) | O: 4.5050 | H: 4.5250 | L: 4.4535 | C: 4.4900 | Δ: +0.0325 | %: +0.73%



FUTURES AND OPTIONS TRADING IS NOT SUITABLE FOR ALL INVESTORS. THE RISK OF LOSS IS SUBSTANTIAL. AN INVESTOR COULD LOSE MORE THAN THE INITIAL INVESTMENT. PAST PERFORMANCE IS NOT NECESSARILY INDICATIVE OF FUTURE RESULTS.

SPECIAL ANNOUNCEMENTS

GET THE FRACTAL FUTURES FORECAST NOW!

FREE! - The 2021 Fractal Futures Forecasts Results are available now FREE, just for asking! This covers approximately 27 major futures markets. You can also get a free 10 minute class to explain how you can use these charts. Many of these charts are amazingly accurate. It's educational! It's simple! It's free! It comes with a money back guarantee. Call Today!

The 2022 Fractal Forecast is available now! Subscribers can get this for 50% off = \$120 for 27 markets for the rest of 2021. You can get a free 10 minute class on how to use this. Contact me today!

**Time Zone – As of November 07, 2021, 2:00 AM, we are observing Eastern Standard Time (GMT -5)
As of March 13, 2022, 2:00 AM, we will be observing Eastern Daylight Time (GMT -4).**

Holiday Schedule – There are no US market holidays this month.

Publishing Schedule – The April letters will be published on the night of Sunday, March 27.

Contact - Please note that our direct telephone number is 239-594-3939. International clients can call me for free on Skype at nwinski_1 . You can reach me during market hours, or leave a message any time and I will call you back as soon as possible. I look forward to helping you.



Thank You!

GOOD TRADING!

All of the material contained herein is the sole opinion of Norm Winski, the publisher of Astro-Trend Publication. Norm Winski will not be held responsible for accidental oversights, typos, or incorrect information from any sources that generate any of the opinions and comments found in this publication. Futures, Options on futures, and Forex trading carry significant risk, and is not for every investor. Only risk capital should be used. Past performance is not necessarily indicative of future results. Any person who chooses to use this information as a basis for any of their trading assumes all the liability and risk for themselves and hereby and absolutely agrees to indemnify and hold harmless Norm Winski. Risk may be more than the funds deposited in a trading account.

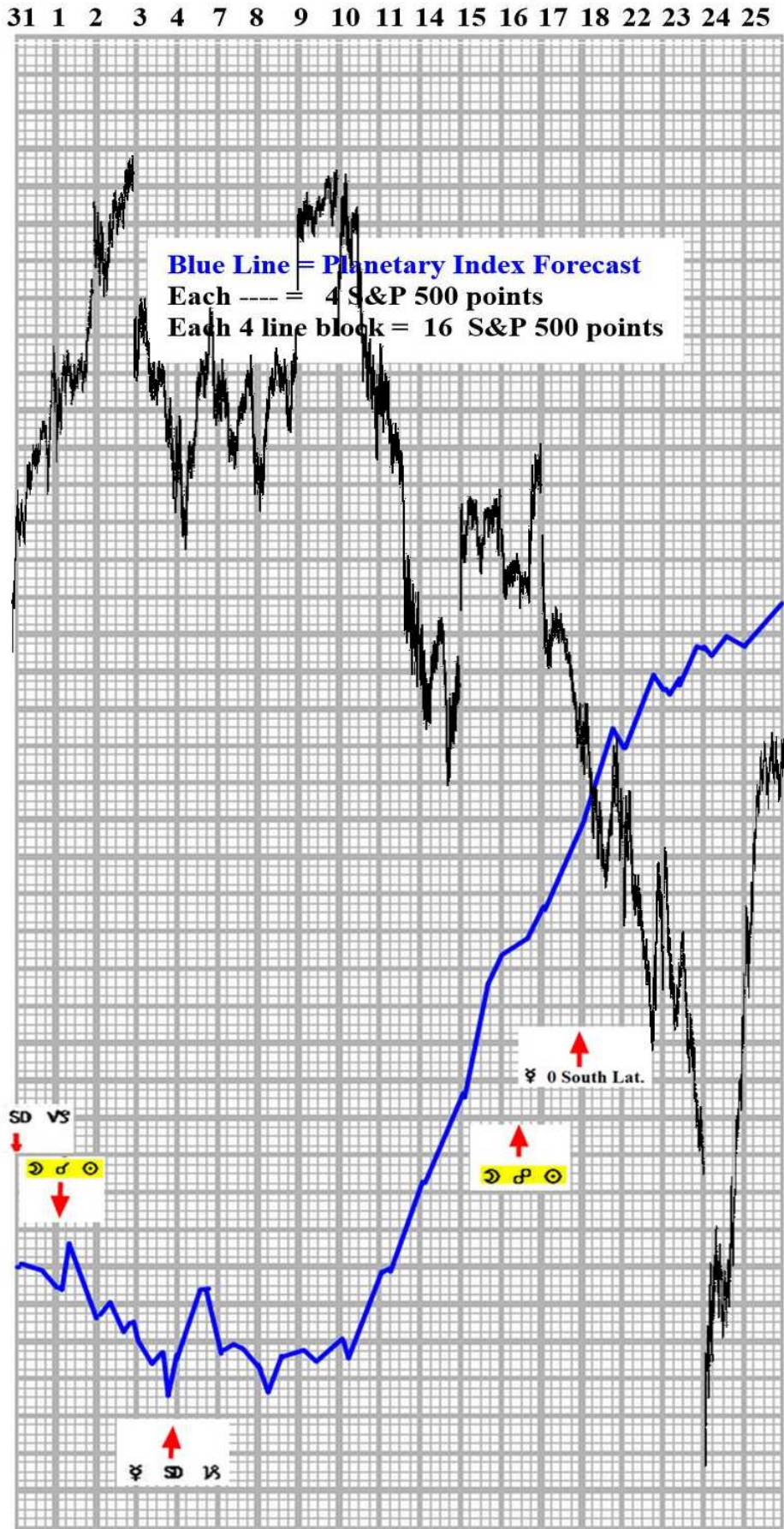
FUTURES AND OPTIONS TRADING IS NOT SUITABLE FOR ALL INVESTORS. THE RISK OF LOSS IS SUBSTANTIAL. AN INVESTOR COULD LOSE MORE THAN THE INITIAL INVESTMENT. PAST PERFORMANCE IS NOT NECESSARILY INDICATIVE OF FUTURE RESULTS.

ASTRO-TREND FEBRUARY STOCK MARKET FORECAST PLANETARY INDEX



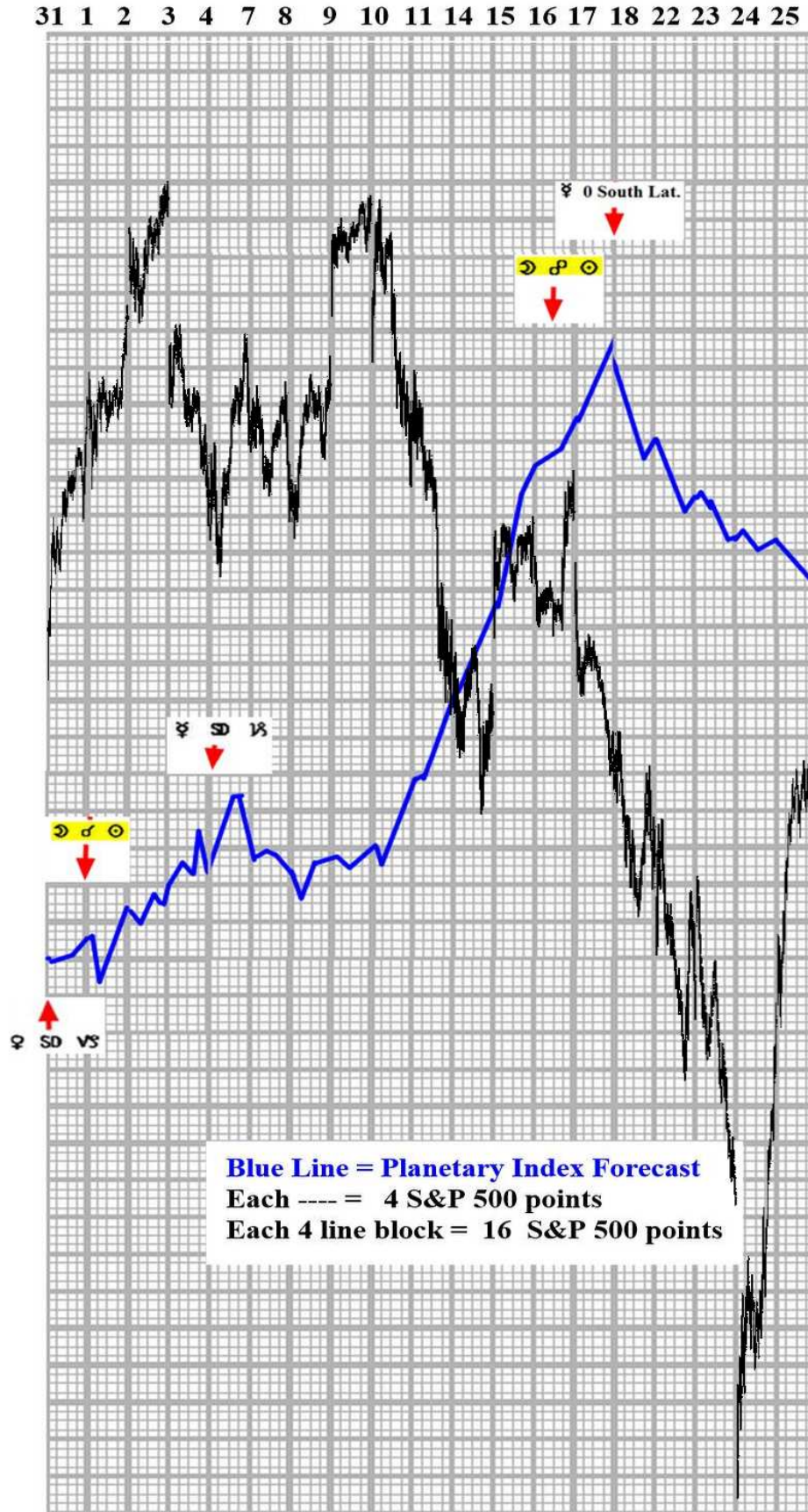
FUTURES AND OPTIONS TRADING IS NOT SUITABLE FOR ALL INVESTORS. THE RISK OF LOSS IS SUBSTANTIAL. AN INVESTOR COULD LOSE MORE THAN THE INITIAL INVESTMENT. PAST PERFORMANCE IS NOT NECESSARILY INDICATIVE OF FUTURE RESULTS.

**ASTRO-TREND
FEBRUARY STOCK MARKET FORECAST
PLANETARY INDEX INVERTED**



FUTURES AND OPTIONS TRADING IS NOT SUITABLE FOR ALL INVESTORS. THE RISK OF LOSS IS SUBSTANTIAL. AN INVESTOR COULD LOSE MORE THAN THE INITIAL INVESTMENT. PAST PERFORMANCE IS NOT NECESSARILY INDICATIVE OF FUTURE RESULTS.

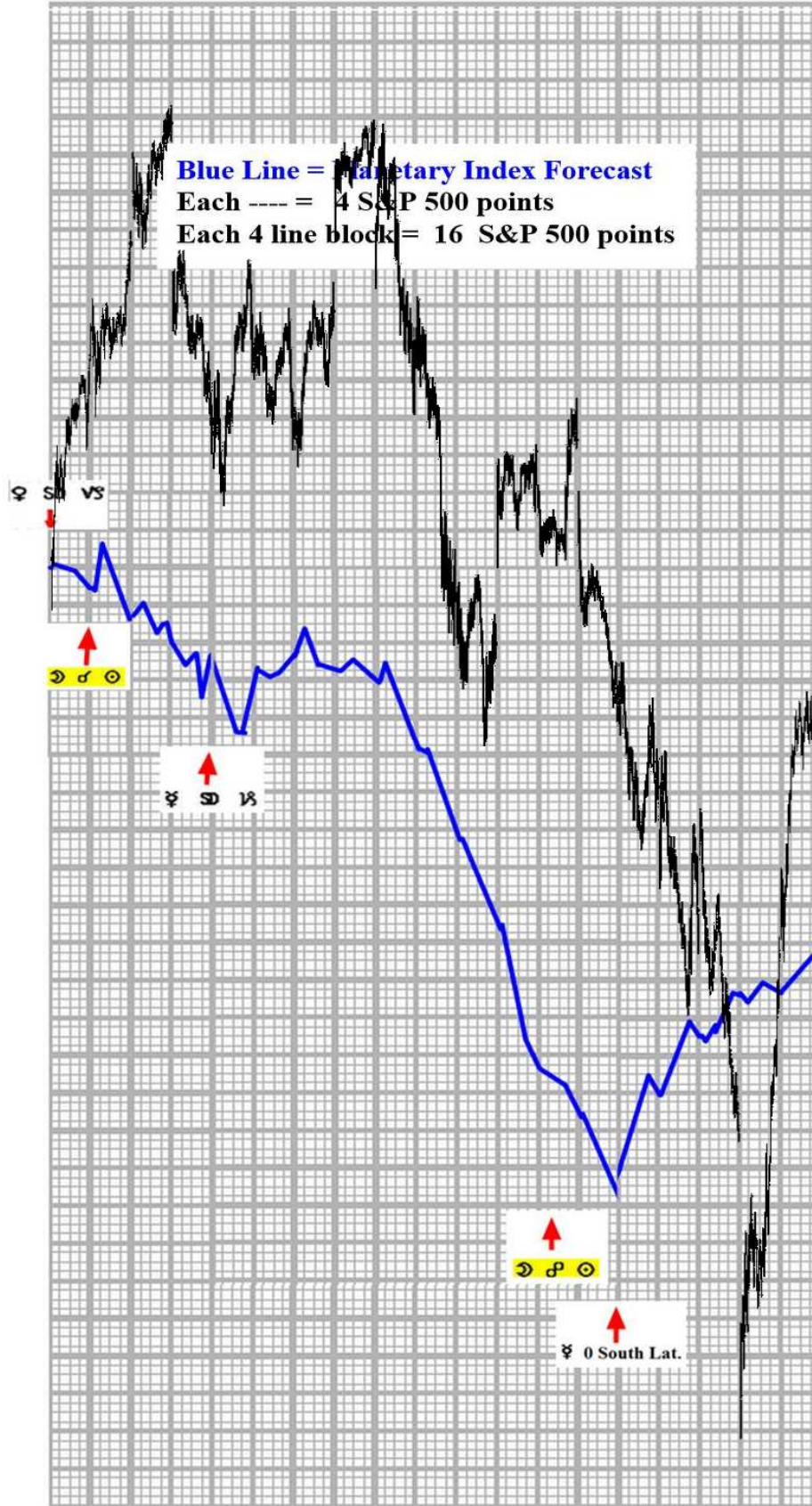
**ASTRO-TREND
FEBRUARY STOCK MARKET FORECAST
POLARITY ADJUSTED PLANETARY INDEX I**



FUTURES AND OPTIONS TRADING IS NOT SUITABLE FOR ALL INVESTORS. THE RISK OF LOSS IS SUBSTANTIAL. AN INVESTOR COULD LOSE MORE THAN THE INITIAL INVESTMENT. PAST PERFORMANCE IS NOT NECESSARILY INDICATIVE OF FUTURE RESULTS.

**ASTRO-TREND
FEBRUARY STOCK MARKET FORECAST
POLARITY ADJUSTED PLANETARY INDEX II**

31 1 2 3 4 7 8 9 10 11 14 15 16 17 18 22 23 24 25



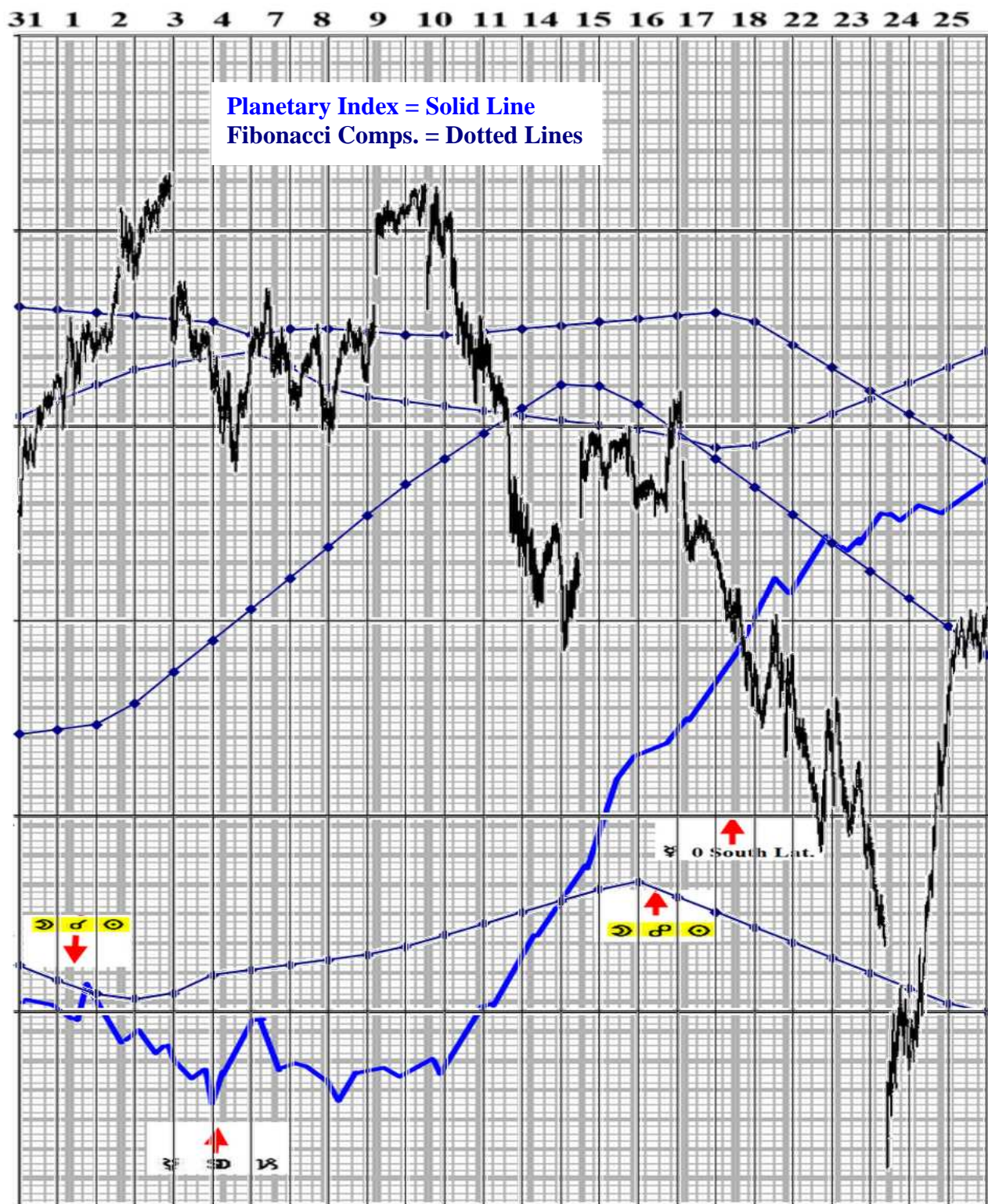
FUTURES AND OPTIONS TRADING IS NOT SUITABLE FOR ALL INVESTORS. THE RISK OF LOSS IS SUBSTANTIAL. AN INVESTOR COULD LOSE MORE THAN THE INITIAL INVESTMENT. PAST PERFORMANCE IS NOT NECESSARILY INDICATIVE OF FUTURE RESULTS.

February 2022 Planetary Index & February 2022 Fibonacci Composite Average



FUTURES AND OPTIONS TRADING IS NOT SUITABLE FOR ALL INVESTORS. THE RISK OF LOSS IS SUBSTANTIAL. AN INVESTOR COULD LOSE MORE THAN THE INITIAL INVESTMENT. PAST PERFORMANCE IS NOT NECESSARILY INDICATIVE OF FUTURE RESULTS.

Inverted February 2022 Planetary Index & February 2022 Fibonacci Composite Average



FUTURES AND OPTIONS TRADING IS NOT SUITABLE FOR ALL INVESTORS. THE RISK OF LOSS IS SUBSTANTIAL. AN INVESTOR COULD LOSE MORE THAN THE INITIAL INVESTMENT. PAST PERFORMANCE IS NOT NECESSARILY INDICATIVE OF FUTURE RESULTS.

March 2022

ASTRO-TREND KEY DATE ACTIVITY CALENDAR

	28	1	2	3	4	7	8	9	10	11	14	15	16	17	18	21	22	23	24	25	
CATTLE		x	X		xX	xX		x	x	x	x		x	xx	x	X	X	X	x	Xx	x
			10			24									28		8			20	
COCOA				X	x	X			x		xx			x		X	x	x	x	X	X
						10									8					8	8
COFFEE		x	Xx	X	XX	X			x		X		x	x	x	X	x	x		X	X
				12	8	20					8					10				20	
COPPER	x		XX		xX	xX		x	x		X		X	x	xx	X	X	X	X	Xx	x
			18		16	34					10		12		8	32	8	14	10	40	
CORN	X	X	XxX		x	X				x	Xx				Xx	X		x		Xx	X
	8	32	8	16		16									20	8				12	8
COTTON		x	X		xX	xX		x	x	x	x		x	xx	x	X	X	X	x	Xx	x
			10			24									28		8			20	
C. I/CRB	X		X	XX	X	X		x		X	X				Xx			X	X	Xx	X
	12		22	32	8	8			16	16					16			10	12	16	10
GOLD		X	x	X		X				x	X				X	x					x
		16		16		10									16						
HOGS				X	x	X			x		xx			x		X	x	x	x	X	X
						10									8					8	8
LUNAR				x											x						
MARS						x															
MERCURY		x																			
OATS	X	X	XxXX		x	X					Xx				Xx	X		X		Xx	X
	12	16	18	28		12									20			10		12	
	28	1	2	3	4	7	8	9	10	11	14	15	16	17	18	21	22	23	24	25	
OIL	X		X	XX	X	X		x		XX	X	X			Xx	X		X	X	Xx	X
	12		26	32	8	24			16		22	10			16	16		16	14	30	10
OPEC	X			x	X	X	X				X	X				X		x		x	X
	12						12				12										12
OJ		X	x	X		X				x	X				X	x					
		16		16		10									16						
SILVER		x	x	X		x					x			x	X	x					
				16											16						
SOYBNS.	X	X	xx		x	xx				x	x			x	Xx	x		x		Xx	X
	8	16				14									32					12	
STOCKS	X	X	XxXX		xX	XX	x	XX	xxXx	xXX	X	Xx	XxxXxxXx	X	X	X	X	X	X	XXxX	
	28	40	26	50	8	54		12		14		10	14	24	58	8	18	18	42	14	
SUGAR			X		xX	X			x		x				x	X	x	x	x	X	x
					12	20									28					8	
SUN																x					
T-BONDS	X	X	X	XX	xx	X	x	Xx	xx	x	xXX	Xx	X	X	xX	xXx	x	X	X	XXxX	
	20	20	8	44		24	12				10	10	12		20	36		10	12	24	22
VENUS						x					x					x					
WHEAT	X	X	XxX		xX	X		X	x		xx		x		XX	X	x	X	x	Xx	X
	8	36		16	16	24		8							24	30		8		12	10
	28	1	2	3	4	7	8	9	10	11	14	15	16	17	18	21	22	23	24	25	

LEGEND: x = CIT; x = Important CIT; X = Very Important CIT; X = Major CIT

FUTURES AND OPTIONS TRADING IS NOT SUITABLE FOR ALL INVESTORS. THE RISK OF LOSS IS SUBSTANTIAL. AN INVESTOR COULD LOSE MORE THAN THE INITIAL INVESTMENT. PAST PERFORMANCE IS NOT NECESSARILY INDICATIVE OF FUTURE RESULTS.

March 2022

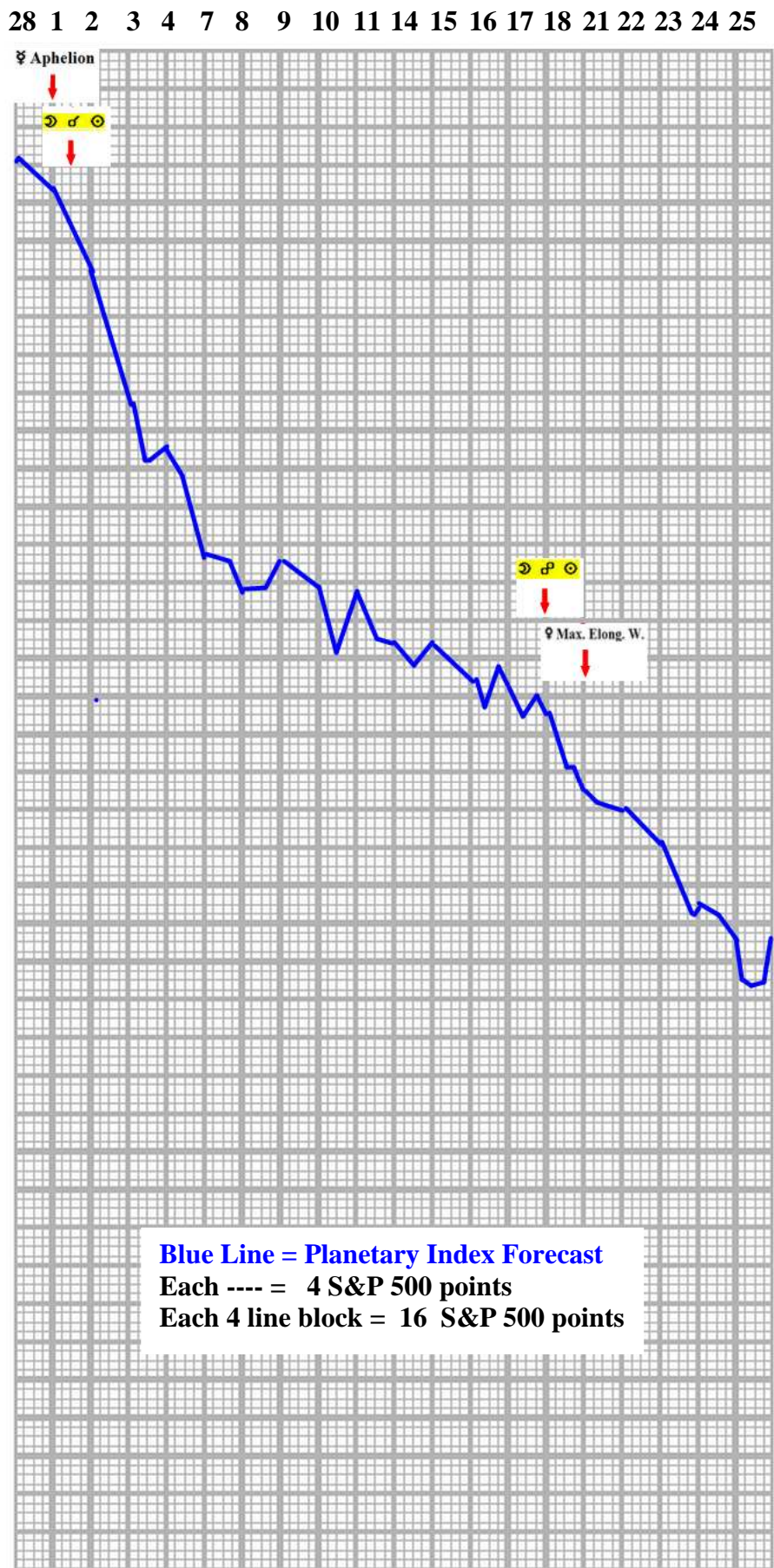
ASTRO-TREND KEY DATE ACTIVITY CALENDAR

	28	1	2	3	4	7	8	9	10	11	14	15	16	17	18	21	22	23	24	25	
AUSTRAL.		X		X							X	x							x		
AUSSIE \$	X	x			X						X			X		X	X		x		XX
	14				8						8					8					16
CANADA						X		x		X				X							X
														12							14
C-BANK	x		x		X	X	X	X	X	x	X	X	XX							x	X
					10	8			8		12		16								8
GERMANY			x	x				x			xX	x									X
																					10
EURO	X					X			x		X	x	X			X	X				
																12	16				
EUROBNK	X		x				x		x		x			x							x
																					X
JAPAN					x	X		x	X		x			x		X		X	XXX		
									16									8	8		
J-BANK	X		xx		xx	X	X	X	X	x			x		x	x	X	x	x	x	x
	10																				
JAP.YEN	X	X			x		x				X					X	x			X	X
	12										8					26					10
TOK.S.E.			x		X	X	X				X			X	x	X	x		x		
											14										
SWITZ.	X	X			x	xX	x	x		x				x		X		X		Xx	x
	8	8				8										16					
SF	X			X	X	X	X		x				x		x	X				x	
	16			8	8	8															
UK	X	x				X		X		x	X		X			X			X		x
	22					12		14								12			10		
BNK.ENG.		X		x		X		X	x			x						X	xX		X
						12															10
BNkEn/Fd	x		x					X			X	X	X	xx			X	x			X
											14										10
US	x	X			xx		X							X		xX					
																10					
US FED	X	x			x	Xx	x								X	X				xxx	X
	8															10					
POWELL						X	x				X			x	X				x	xX	
											8									8	
US \$	X	X	X	XX	x	X	x	Xx	xx	x	xXx	Xx	Xx	X	xX	xXxxx		X	X	Xx	X
	32	24	14	38		20	12				10	10	12	24	32		12	16	8	22	
NYSE	X	x	X		x	x				x	X	x			X	X	X	x			x
	10																				
DJIA	X			XX	x	xX	Xx	xXx	x	x	X	Xx	x	x	X	X		x	xX	x	X
				20		14		20			8					22					12
S&P500	x	xX		xX	x	X	Xx	Xx	x	X	X	xx		X	x	X		X	X	x	X
						30	10	10			8					18		10			8
NASD	x				X	x		x	x		X		x			X		x		X	
					8											12					16
STOX	X	x		X	x	X	x	X	x	X	xx	x	x	x	X		X		x	X	X
					12		8									15					
WRLDBNKS	X	x	x	xx	x	Xx	x	xx	xx	x	x		x	x	x	x	x	x	xxxx		X
	28	1	2	3	4	7	8	9	10	11	14	15	16	17	18	21	22	23	24	25	

LEGEND: x = CIT; x = Important CIT; X = Very Important CIT; X = Major CIT

FUTURES AND OPTIONS TRADING IS NOT SUITABLE FOR ALL INVESTORS. THE RISK OF LOSS IS SUBSTANTIAL. AN INVESTOR COULD LOSE MORE THAN THE INITIAL INVESTMENT. PAST PERFORMANCE IS NOT NECESSARILY INDICATIVE OF FUTURE RESULTS.

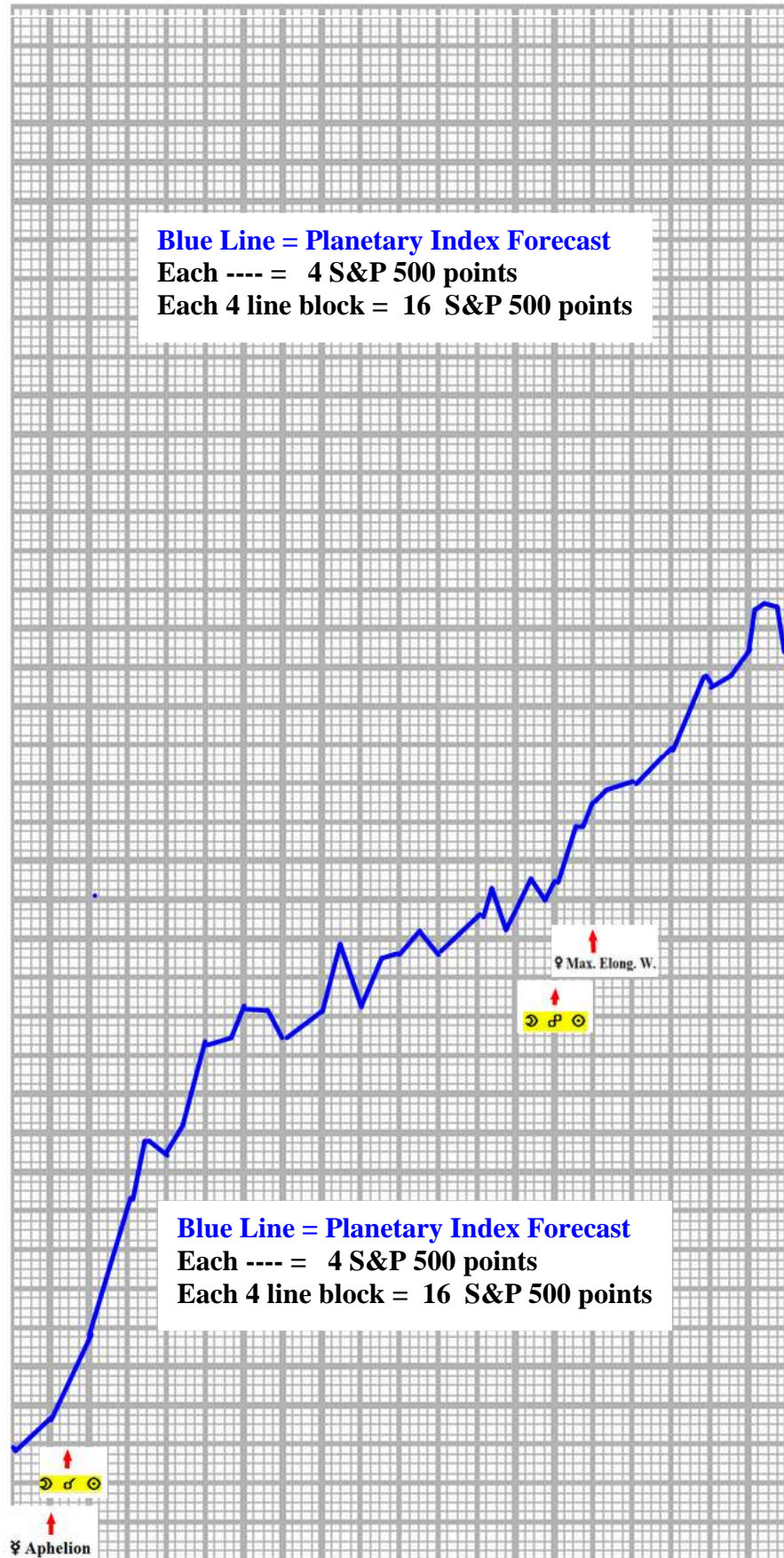
ASTRO-TREND MARCH STOCK MARKET FORECAST PLANETARY INDEX



FUTURES AND OPTIONS TRADING IS NOT SUITABLE FOR ALL INVESTORS. THE RISK OF LOSS IS SUBSTANTIAL. AN INVESTOR COULD LOSE MORE THAN THE INITIAL INVESTMENT. PAST PERFORMANCE IS NOT NECESSARILY INDICATIVE OF FUTURE RESULTS.

**ASTRO-TREND
 MARCH STOCK MARKET FORECAST
 PLANETARY INDEX INVERTED**

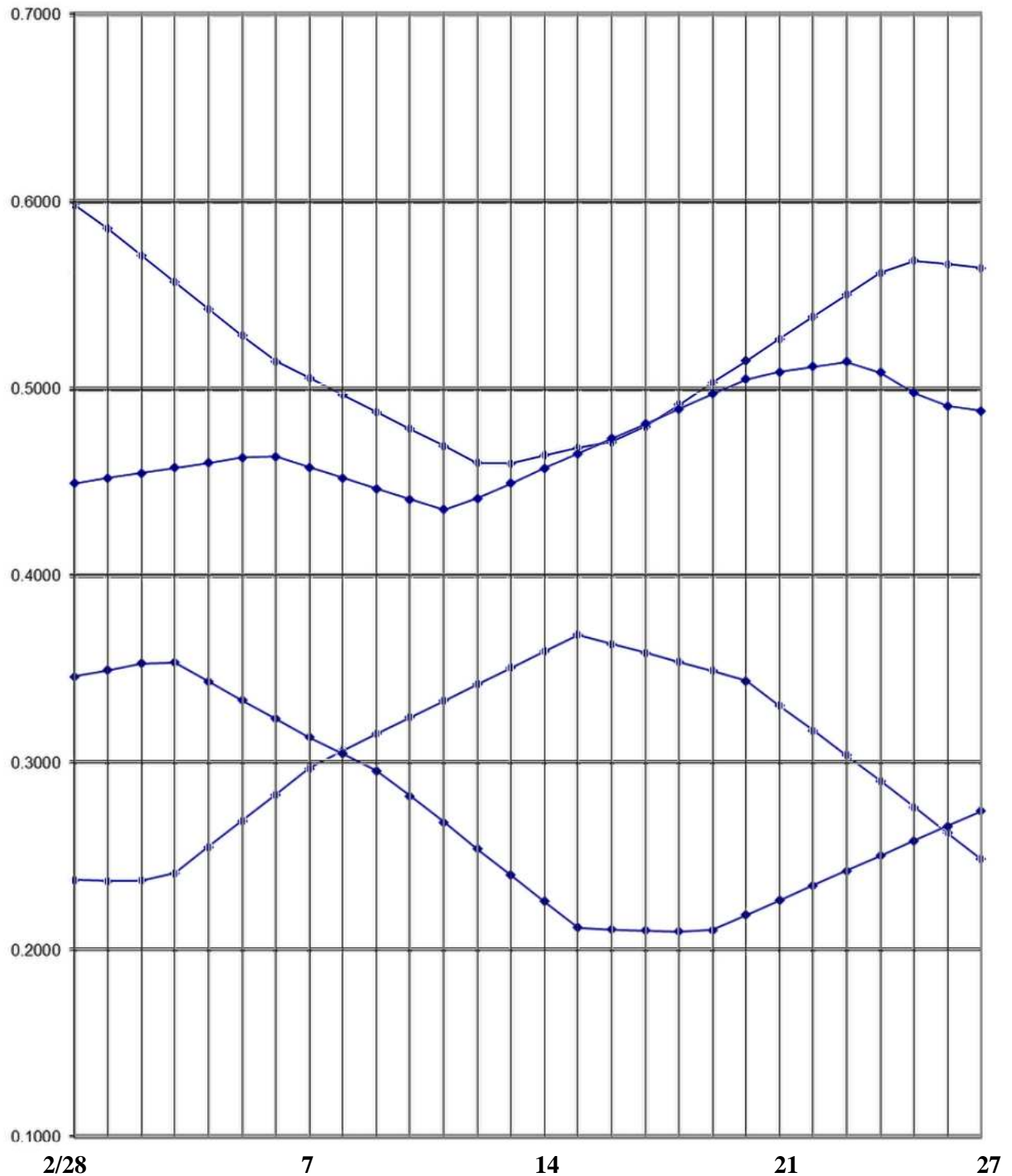
28 1 2 3 4 7 8 9 10 11 14 15 16 17 18 21 22 23 24 25



FUTURES AND OPTIONS TRADING IS NOT SUITABLE FOR ALL INVESTORS. THE RISK OF LOSS IS SUBSTANTIAL. AN INVESTOR COULD LOSE MORE THAN THE INITIAL INVESTMENT. PAST PERFORMANCE IS NOT NECESSARILY INDICATIVE OF FUTURE RESULTS.

FIBONACCI COMPOSITE AVERAGE

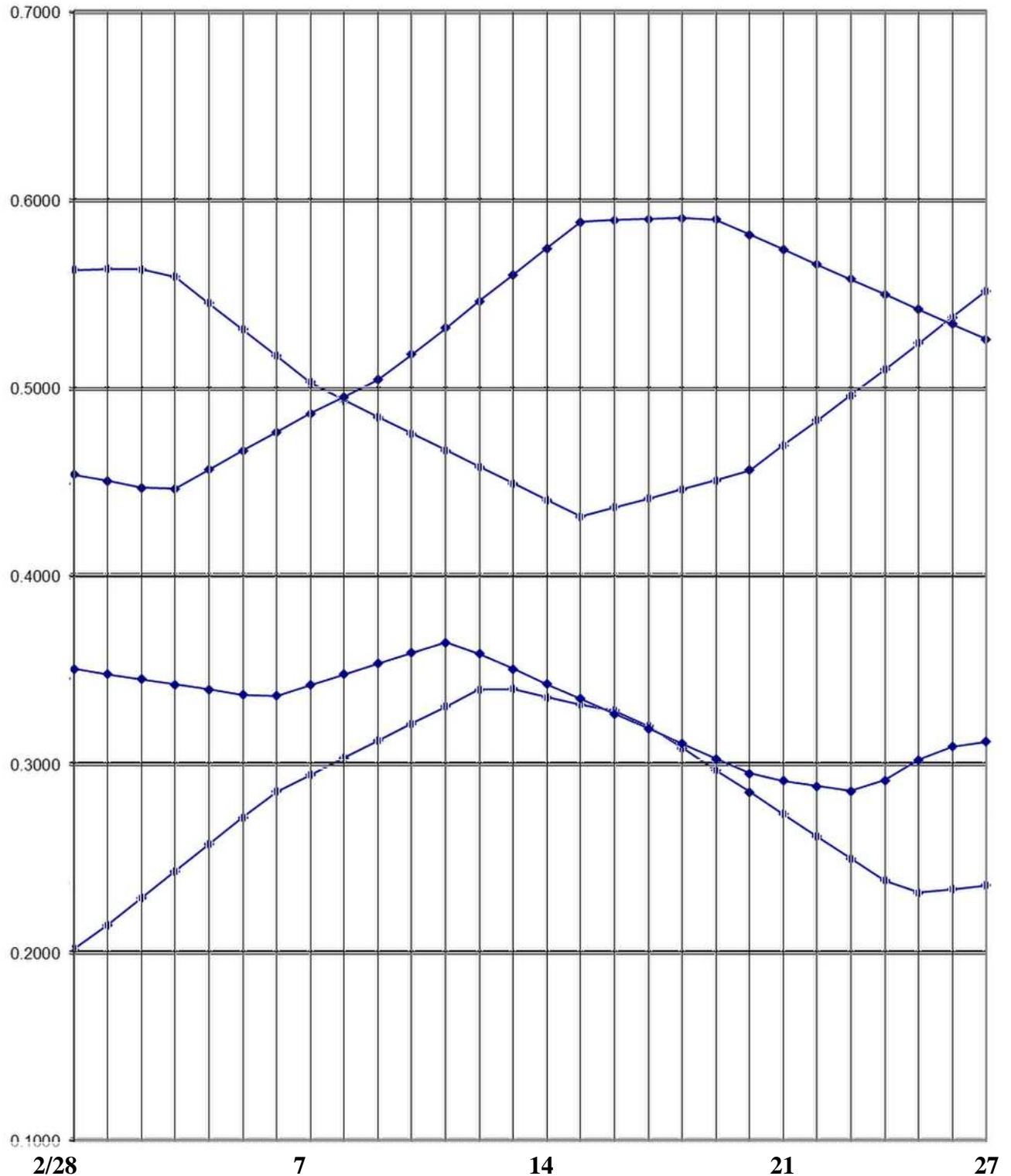
MARCH 2022



FUTURES AND OPTIONS TRADING IS NOT SUITABLE FOR ALL INVESTORS. THE RISK OF LOSS IS SUBSTANTIAL. AN INVESTOR COULD LOSE MORE THAN THE INITIAL INVESTMENT. PAST PERFORMANCE IS NOT NECESSARILY INDICATIVE OF FUTURE RESULTS.

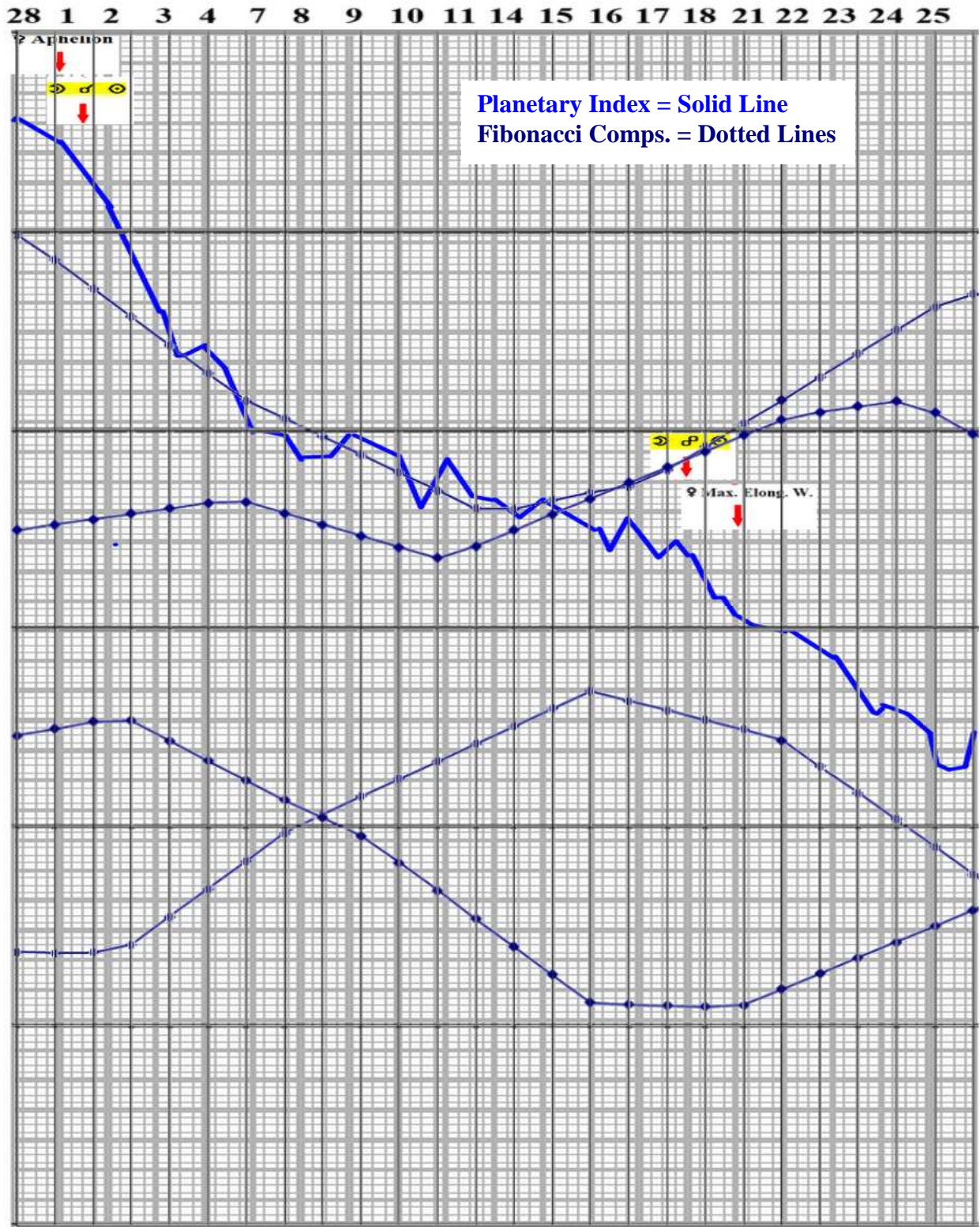
INVERTED FIBONACCI COMPOSITE AVERAGES

MARCH 2022



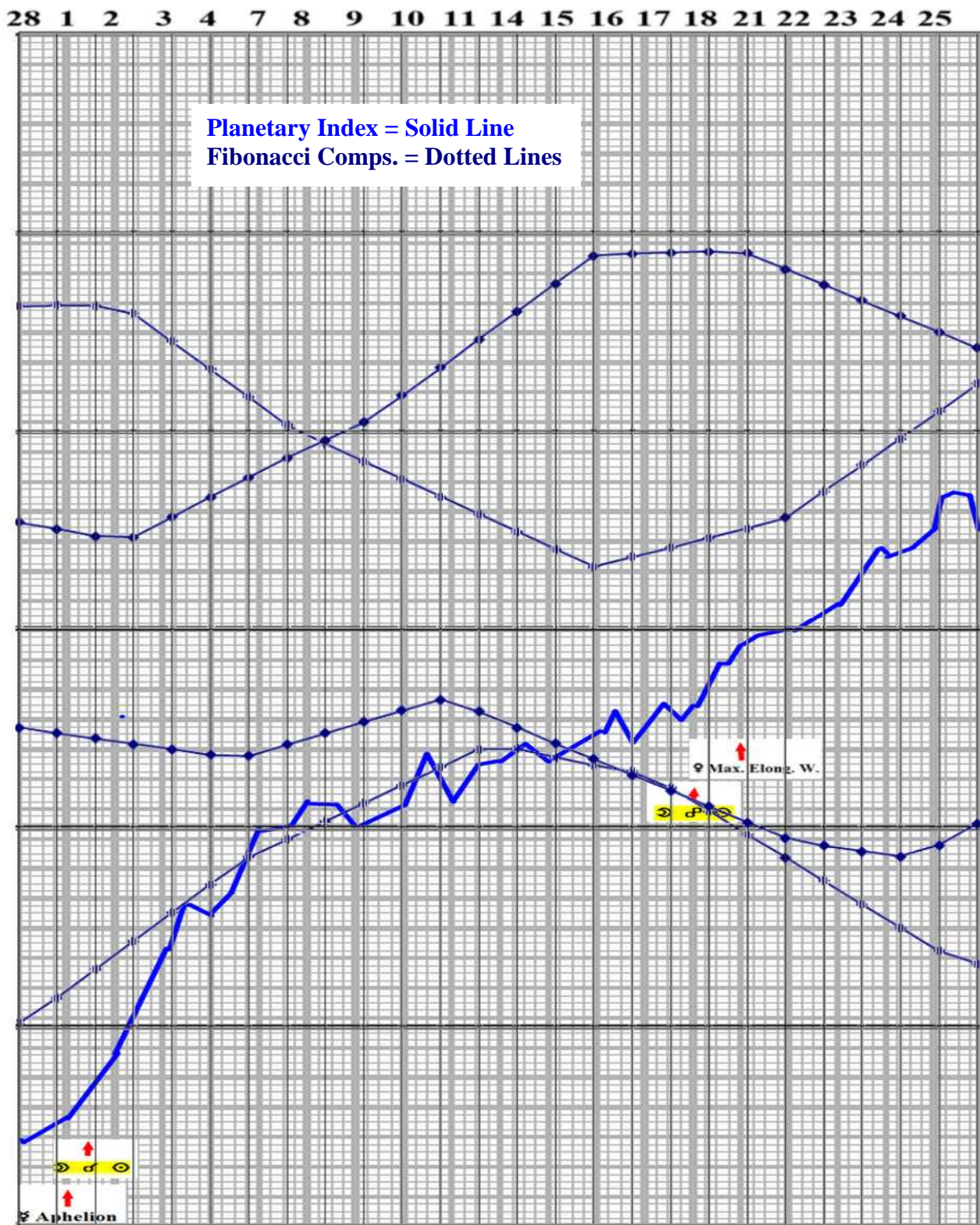
FUTURES AND OPTIONS TRADING IS NOT SUITABLE FOR ALL INVESTORS. THE RISK OF LOSS IS SUBSTANTIAL. AN INVESTOR COULD LOSE MORE THAN THE INITIAL INVESTMENT. PAST PERFORMANCE IS NOT NECESSARILY INDICATIVE OF FUTURE RESULTS.

March 2022 Planetary Index & March 2022 Fibonacci Composite Average



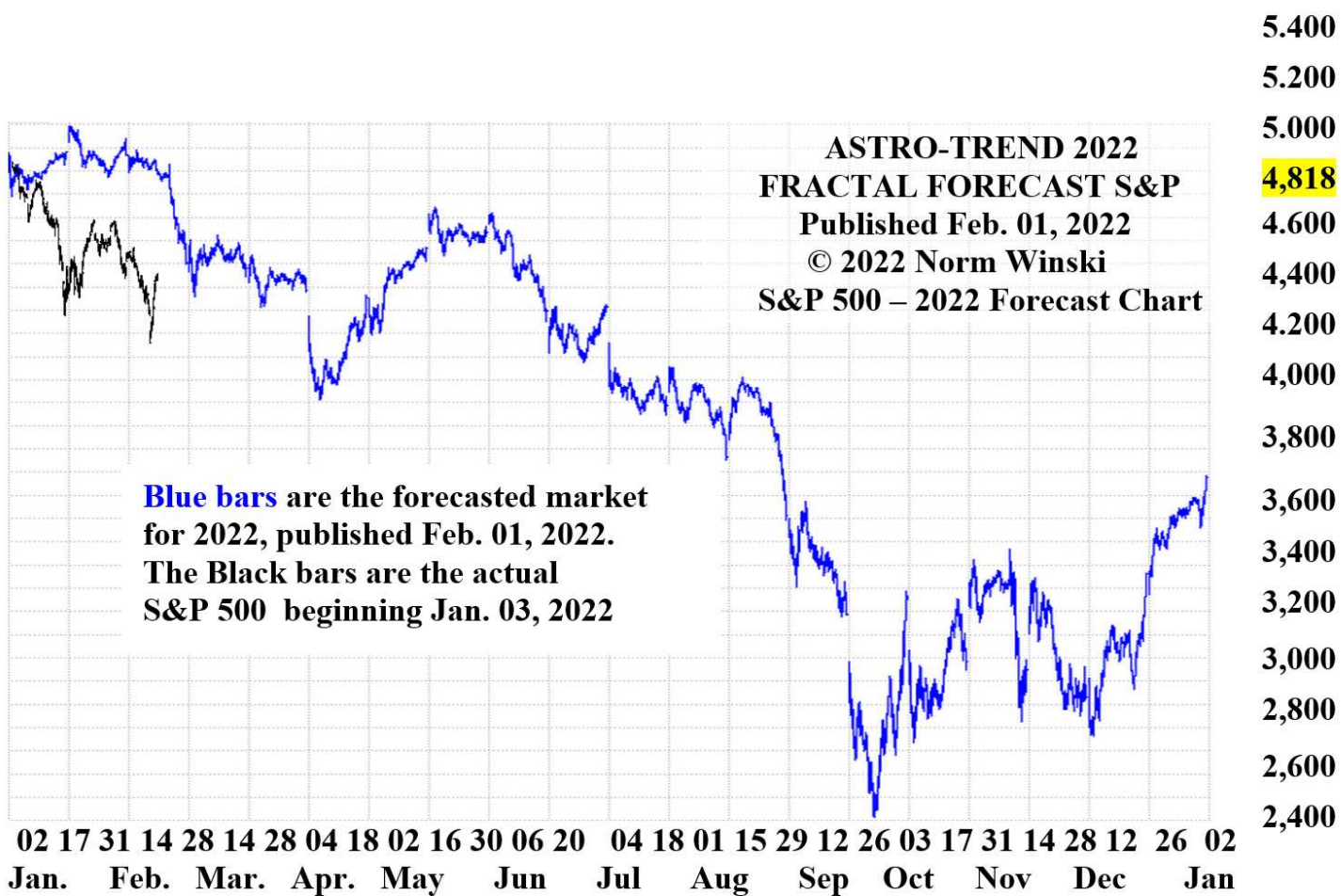
FUTURES AND OPTIONS TRADING IS NOT SUITABLE FOR ALL INVESTORS. THE RISK OF LOSS IS SUBSTANTIAL. AN INVESTOR COULD LOSE MORE THAN THE INITIAL INVESTMENT. PAST PERFORMANCE IS NOT NECESSARILY INDICATIVE OF FUTURE RESULTS.

Inverted March 2022 Planetary Index & March 2022 Fibonacci Composite Average



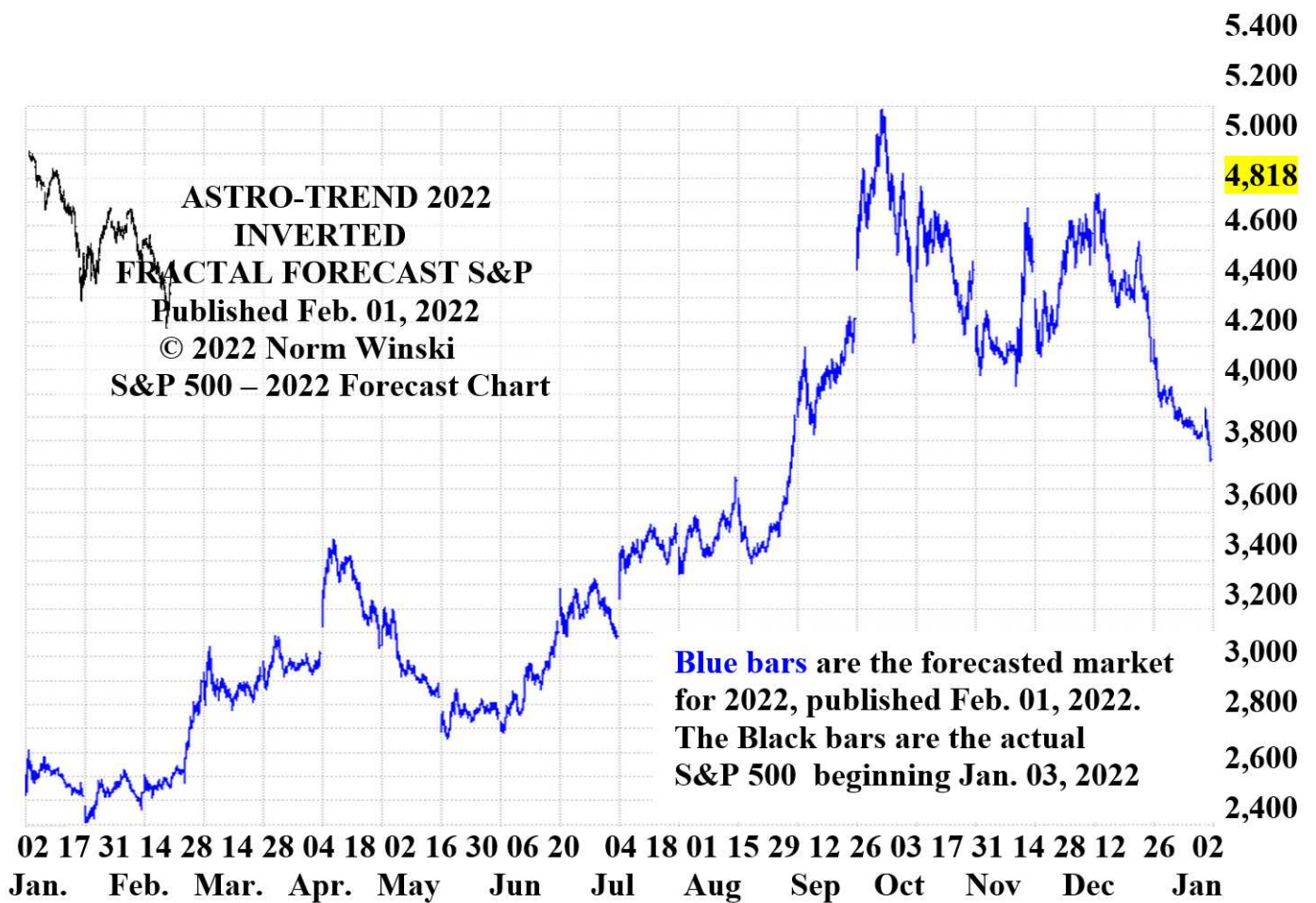
FUTURES AND OPTIONS TRADING IS NOT SUITABLE FOR ALL INVESTORS. THE RISK OF LOSS IS SUBSTANTIAL. AN INVESTOR COULD LOSE MORE THAN THE INITIAL INVESTMENT. PAST PERFORMANCE IS NOT NECESSARILY INDICATIVE OF FUTURE RESULTS.

Jan. Feb. Mar. Apr. May Jun Jul Aug Sep Oct Nov Dec Jan
 02 17 31 14 28 14 28 04 18 02 16 30 06 20 04 18 01 15 29 12 26 03 17 31 14 28 12 26 02



FUTURES AND OPTIONS TRADING IS NOT SUITABLE FOR ALL INVESTORS. THE RISK OF LOSS IS SUBSTANTIAL. AN INVESTOR COULD LOSE MORE THAN THE INITIAL INVESTMENT. PAST PERFORMANCE IS NOT NECESSARILY INDICATIVE OF FUTURE RESULTS.

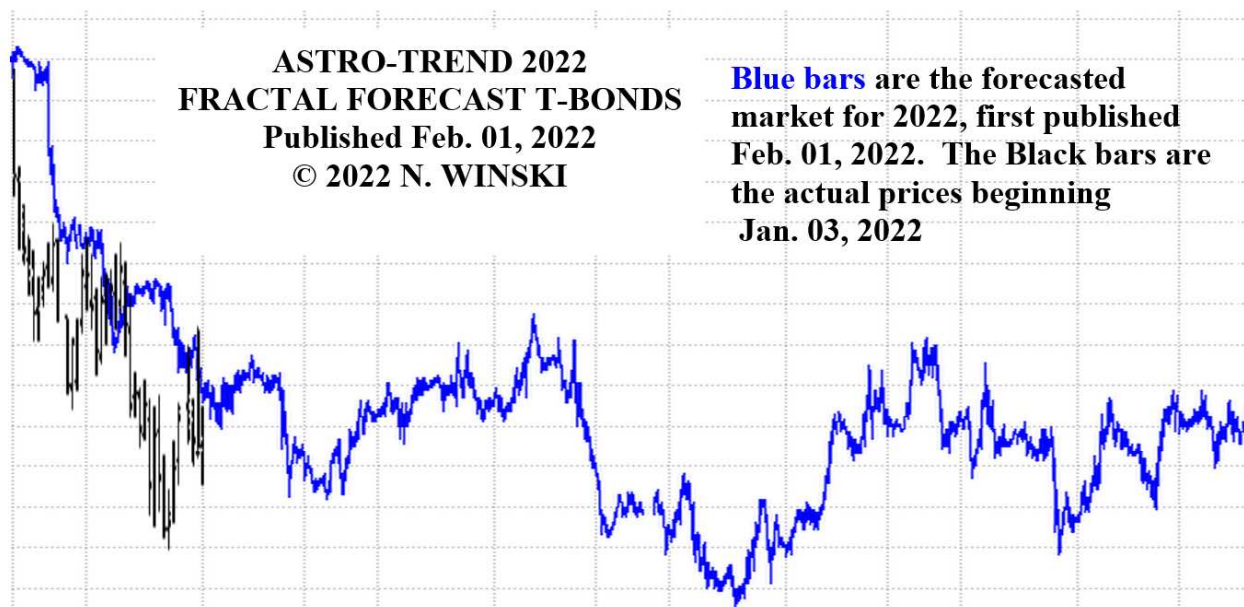
Jan. Feb. Mar. Apr. May Jun Jul Aug Sep Oct Nov Dec Jan
 02 17 31 14 28 14 28 04 18 02 16 30 06 20 04 18 01 15 29 12 26 03 17 31 14 28 12 26 02



FUTURES AND OPTIONS TRADING IS NOT SUITABLE FOR ALL INVESTORS. THE RISK OF LOSS IS SUBSTANTIAL. AN INVESTOR COULD LOSE MORE THAN THE INITIAL INVESTMENT. PAST PERFORMANCE IS NOT NECESSARILY INDICATIVE OF FUTURE RESULTS.

Jan. Feb. Mar. Apr. May Jun Jul Aug Sep Oct Nov Dec Jan
 02 17 31 14 28 14 28 04 18 02 16 30 06 20 04 18 01 15 29 12 26 03 17 31 14 28 12 26 02

170-00
 168-00
 166-00
 164-00
 162-00
 160-00
 158-00
 156-00
 154-00
 152-00
 150-00
 148-00
 146-00



02 17 31 14 28 14 28 04 18 02 16 30 06 20 04 18 01 15 29 12 26 03 17 31 14 28 12 26 02
 Jan. Feb. Mar. Apr. May Jun Jul Aug Sep Oct Nov Dec Jan

FUTURES AND OPTIONS TRADING IS NOT SUITABLE FOR ALL INVESTORS. THE RISK OF LOSS IS SUBSTANTIAL. AN INVESTOR COULD LOSE MORE THAN THE INITIAL INVESTMENT. PAST PERFORMANCE IS NOT NECESSARILY INDICATIVE OF FUTURE RESULTS.

Jan. Feb. Mar. Apr. May Jun Jul Aug Sep Oct Nov Dec Jan
 02 17 31 14 28 14 28 04 18 02 16 30 06 20 04 18 01 15 29 12 26 03 17 31 14 28 12 26 02



FUTURES AND OPTIONS TRADING IS NOT SUITABLE FOR ALL INVESTORS. THE RISK OF LOSS IS SUBSTANTIAL. AN INVESTOR COULD LOSE MORE THAN THE INITIAL INVESTMENT. PAST PERFORMANCE IS NOT NECESSARILY INDICATIVE OF FUTURE RESULTS.